



Gene content, phage cycle regulation model and prophage inactivation disclosed by prophage genomics in the *Helicobacter pylori* Genome Project

Filipa F. Vale, HpGP Research Network, Richard J. Roberts, Ichizo Kobayashi, M. Constanza Camargo & Charles S. Rabkin

To cite this article: Filipa F. Vale, HpGP Research Network, Richard J. Roberts, Ichizo Kobayashi, M. Constanza Camargo & Charles S. Rabkin (2024) Gene content, phage cycle regulation model and prophage inactivation disclosed by prophage genomics in the *Helicobacter pylori* Genome Project, Gut Microbes, 16:1, 2379440, DOI: [10.1080/19490976.2024.2379440](https://doi.org/10.1080/19490976.2024.2379440)

To link to this article: <https://doi.org/10.1080/19490976.2024.2379440>



© 2024 The Author(s). Published with license by Taylor & Francis Group, LLC.



[View supplementary material](#)



Published online: 12 Aug 2024.



[Submit your article to this journal](#)



Article views: 3190



[View related articles](#)



[View Crossmark data](#)



Citing articles: 1 [View citing articles](#)

Gene content, phage cycle regulation model and prophage inactivation disclosed by prophage genomics in the *Helicobacter pylori* Genome Project

Filipa F. Vale^{a,b}, HpGP Research Network*, Richard J. Roberts^c, Ichizo Kobayashi^{d,e,f,g}, M. Constanza Camargo^{h,#}, and Charles S. Rabkin^{h,#}

^aBioISI – Instituto de Biosistemas e Ciências Integrativas, Faculdade de Ciências, Universidade de Lisboa, Lisbon, Portugal; ^bResearch Institute for Medicines (iMed-ULisboa), Faculty of Pharmacy, Universidade de Lisboa, Lisbon, Portugal; ^cNew England Biolabs, Ipswich, MA, USA; ^dResearch Center for Micro-Nano Technology, Hosei University, Tokyo, Japan; ^eDepartment of Computational Biology and Medical Sciences, Graduate School of Frontier Sciences, University of Tokyo, Tokyo, Japan; ^fInstitute of Medical Science, University of Tokyo, Tokyo, Japan; ^gLaboratory of Genome Informatics, National Institute for Basic Biology, Okazaki, Aichi, Japan; ^hDivision of Cancer Epidemiology and Genetics, National Cancer Institute, Rockville, MD, USA

ABSTRACT

Prophages can have major clinical implications through their ability to change pathogenic bacterial traits. There is limited understanding of the prophage role in ecological, evolutionary, adaptive processes and pathogenicity of *Helicobacter pylori*, a widespread bacterium causally associated with gastric cancer. Inferring the exact prophage genomic location and completeness requires complete genomes. The international *Helicobacter pylori* Genome Project (HpGP) dataset comprises 1011 *H. pylori* complete clinical genomes enriched with epigenetic data. We thoroughly evaluated the *H. pylori* prophage genomic content in the HpGP dataset. We investigated population evolutionary dynamics through phylogenetic and pangenome analyses. Additionally, we identified genome rearrangements and assessed the impact of prophage presence on bacterial gene disruption and methylome. We found that 29.5% (298) of the HpGP genomes contain prophages, of which only 32.2% (96) were complete, minimizing the burden of prophage carriage. The prevalence of *H. pylori* prophage sequences was variable by geography and ancestry, but not by disease status of the human host. Prophage insertion occasionally results in gene disruption that can change the global bacterial epigenome. Gene function prediction allowed the development of the first model for lysogenic-lytic cycle regulation in *H. pylori*. We have disclosed new prophage inactivation mechanisms that appear to occur by genome rearrangement, merger with other mobile elements, and pseudogene accumulation. Our analysis provides a comprehensive framework for *H. pylori* prophage biological and genomics, offering insights into lysogeny regulation and bacterial adaptation to prophages.

ARTICLE HISTORY

Received 24 March 2024
Revised 19 June 2024
Accepted 8 July 2024

KEYWORDS



HpGP; *H. pylori*; prophage; mobile elements; genome rearrangement; phage cycle

Introduction

Helicobacter pylori is a common bacterial pathogen infecting ~50% of the human population worldwide, which is etiologically associated with gastritis, peptic ulcer disease, gastric adenocarcinoma, and mucosa-associated lymphoid tissue lymphoma.^{1,2} *H. pylori* is characterized by wide genomic diversity, which contributes to its pathogenicity and to host adaptation.³ The genome diversity is brought about by high mutation rates and fine mutual homologous recombination. *H. pylori*'s discrete population structure, resulting from within-


household transmission and persistent infection, has been used to trace human migration.^{1,4,5}

The genomic diversity of *H. pylori* is extensible to its prophages.^{6–8} Bacteriophages (phages) are viruses classified into two main categories: lytic and temperate. Lytic phages enter in a productive lytic cycle upon infection, resulting in phage genome replication and packaging, leading to progeny phage release through bacterial lysis. Conversely, temperate phages occasionally initiate replication upon host entry, while often follow the lysogenic cycle integrating into the bacterial genome to

CONTACT Filipa F. Vale  vale.filipa@gmail.com  Edifício C2. Faculdade de Ciências, Universidade de Lisboa, Campo Grande, Lisboa 1749-016, Portugal

[#]These authors jointly supervised this work.

*A list of authors and affiliations appears at the end of the paper.

 Supplemental data for this article can be accessed online at <https://doi.org/10.1080/19490976.2024.2379440>

© 2024 The Author(s). Published with license by Taylor & Francis Group, LLC.

This is an Open Access article distributed under the terms of the Creative Commons Attribution License (<http://creativecommons.org/licenses/by/4.0/>), which permits unrestricted use, distribution, and reproduction in any medium, provided the original work is properly cited. The terms on which this article has been published allow the posting of the Accepted Manuscript in a repository by the author(s) or with their consent.

become a prophage. The prophages are vertically inherited during cell division, where the lysogenic state is maintained by the repression of phage lytic genes.⁹ Prophages can alter bacterial phenotypes, namely by encoding virulence factors, auxiliary metabolic genes, antibiotic resistance, immune evasion genes, and more.¹⁰ Additionally, prophage integration near or into critical bacterial genes may regulate gene expression, functioning as an on/off switch known as active lysogeny.⁹ Most genome sequences available consist of multiple contigs and lack methylome data, hindering prophage analysis for completeness, module order, and insertion site.

Previous research found prophage genes in ~20% of *H. pylori* genomes, belonging to the *Schmidvirus* genus.^{6,11} These prophages show genome synteny, a structured population,^{7,12} and high recombination rate.⁸ Yet, a comprehensive analysis of global *H. pylori* prophages and a model for the lytic–lysogenic transition are lacking. Annotating bacteriophage genomes is challenging due to high gene diversity, especially for genes involved in prophage lysogeny regulation and subversion of host metabolism, which are prone to rapid evolution.¹³ Accordingly, the *H. pylori* prophage pangenome includes ~60% unknown function proteins,⁸ hindering our understanding of phage cycle regulation, and the phage–bacteria arms race.¹⁴

Prophages often undergo a complex decay, leading to incomplete or cryptic remnants in bacterial genomes, preventing the lytic cycle.¹⁵ This decay process involves modular exchanges, point mutations, phage genome rearrangements, inactivation by other mobile DNA elements, and DNA deletion.¹⁶ The integration of prophages into the bacterial chromosome releases phage DNA from the selective pressures affecting replicating phages, allowing for gradual decay and diversification. Within the chromosome, prophages can recombine with other genetic elements, resulting in the formation of new chimeric phage types. Even heavily deleted and unable to follow the lytic cycle, prophage remnants can still serve as phage gene reservoirs in the bacterial chromosome.¹⁷ Thus, cryptic prophages may benefit the host by providing host adaptation features.¹⁸ While *H. pylori* may contain cryptic prophages, their prevalence and decay processes remain poorly understood.

The *H. pylori* Genome Project (*HpGP*) gathered 1011 genomes of clinical isolates from 50 countries. Here, we analyzed this high-quality dataset to assess prophage occurrence for the first time in a large collection of complete, closed genomes, enriched with methylome data for comprehensive prophage genomics. Prophage sequences are often scattered across the genome and can impact the methylome. We suggest that the bacterial genome shuffling, merging of prophages with other mobile elements, and pseudogene accumulation constitute the *H. pylori* prophage decay process. This unprecedented collection of curated prophages provides a resource to study phage cycle regulation and prophage inactivation, opening the way for further insights through wet-lab experiments.

Results and discussion

Prophages are relatively common elements in H. pylori genomes

Of the 1011 *HpGP* genomes, 1004 are closed complete genomes and seven could not be circularized. All identified prophage sequences were manually inspected to accurately define and delimit each sequence. Most publicly available genomes correspond to contigs/scaffolds (e.g., 5393/6301; 83.6% fragmented genomes at NCBI). Using closed genomes is of extreme importance as it enables us to determine whether the prophage sequences are spread across the bacterial chromosome or lie adjacent to each other and in what order.

Out of the *HpGP* set, 368 prophage sequences were identified in 298 genomes (29.5%, 298/1011). PhiSpy algorithm¹⁹ did not detect any additional novel prophage in addition to BLASTn and phage word search. Among the genomes with prophages, 96 (32.2%, 96/298) carried presumably complete full-length prophages. Out of the total prophage sequences found (368), the majority (272) were incomplete and undergoing a decay process, which potentially reduces the prophage carriage burden. However, genes from remnant prophages might reintegrate into the bacteriophage gene pool through recombination with other infecting phages.²⁰ Prophage regions that were uninterrupted and spanned over 20 kb, featuring a composition of prophage genes that defined the

boundaries of the sequence, were marked as complete prophages. In contrast, prophage regions that were shorter in length, lacked phage genes to define their boundaries, or instances where most genes were not phage genes, were categorized as incomplete. Prophage frequency depends on the restriction and modification (RM) systems present.²¹ The extreme diversity in the *H. pylori* methylome²² suggests that these RM systems protect the host from phage infection, justifying the moderate prophage frequency, and specific prophage populations (discussed below) across different *H. pylori* populations.

In the *HpGP* dataset, complete prophages comprised, on average, 1.7% of the bacterial genome size, while incomplete or remnant prophages constituted, on average, 0.9% of the genome size. Related to the gene content, complete prophages encode an average of 2.1% of the total *H. pylori* genes, while the remnant prophages encode, on average, 1.1% of the total genes. Accordingly, *H. pylori* genomes with prophages are significantly larger than the ones without them (bacteria with prophage genome size average was $1,652,199 \pm 35248$ bp, and without was $1,626,977 \pm 40819$ bp, Mann-Whitney U-test p-value $<.0001$), with a tendency toward lower guanine and cytosine percent (GC%) (bacteria with prophage GC% average was $38.91 \pm 0.14\%$, and without was $38.93 \pm 0.15\%$, t-student test p-value = .0153) (Supplementary Figure S1.a.). Prophage genomes have a GC% content lower than the bacterial one (36.4% vs. 38.9%), suggesting horizontal gene transfer.²³ Complete prophages have, on average, 28.5 Kb; standard deviation (SD), 6.9 Kb, while the incomplete ones have 10.6; SD, 7.2 Kb (Supplementary Figure S1.b.).

Prophages present an uneven prevalence by country of isolation and *H. pylori* ancestry

The prevalence of prophages varies geographically (Fisher's exact test p-value $<.0001$; Supplementary Figure S1.c., Table S1). The highest (70%; 7/10) prevalence was observed on Russian genomes, while the absence of prophages was noted in genomes from Canada ($n = 20$), Gambia ($n = 5$), Guatemala ($n = 3$), and Kazakhstan ($n = 2$). Nevertheless, the small sample size in some

countries may limit the accuracy of these estimates. An interesting observation is the absence of complete prophages among the Japanese genomes. It is worth noting that *H. pylori* phages identified in Japanese strains, such as KHP30 and KHP40, were reported to exist as extrachromosomal episomes, indicative of a pseudolysogenic state.²⁴ However, we could not identify the presence of such phage episomes in the *HpGP* dataset, neither for Japan nor for other genomes. It is possible that the analyzed Japanese strains could be susceptible to infection by KHP30-like phages, which appear to be present as an episome despite carrying an integrase gene.

The significantly uneven prevalence of prophages is also exhibited by ancestry (Fisher's exact test p-value = $<.0001$). *H. pylori* populations like hspSWEuropeEAfricaUSA (76%; 13/17) and hspEurasia2 (55%; 43/78) have the highest prevalence of prophages, while hspIndigenousAmerica (1 out of 22) and hpAfrica2 (0 out of 4) have the lowest (Table 1, Figure 1c). The variable prevalence mirrors the evolutionary trajectory of phage acquisition and loss, along with local adaptation. One possible explanation is that the *H. pylori* populations without prophages diverged before prophage acquisition or originated from an ancestral subset without prophages. If the absence of prophages in a larger sample is confirmed, then this could explain why the hpAfrica2 population, the most divergent among *H. pylori* populations, lacks any prophage, possibly indicating a split from other *H. pylori* populations prior to prophage acquisition. Thus, the limited number of hpAfrica2 genomes in our *HpGP* dataset underscores the importance of investigating prophage presence in more samples from this group. The distinct prevalence across populations suggests that prophages could contribute to the evolution of more adapted *H. pylori* subpopulations. Some bacterial populations may have acquired mechanisms to regulate or control prophage induction and maintain a balance between lysogeny and the lytic cycle. This equilibrium could result in more stable prophage integration and a higher abundance of prophages in those populations.

The prophage prevalence was similar regardless of disease status of the host (i.e., non-atrophic gastritis, advanced intestinal metaplasia and gastric cancer, Chi-square test p-value = .4254), suggesting

Table 1. Prophage prevalence by *H. pylori* ancestry.

<i>H. pylori</i> population	Total number of genomes	Genomes with prophage (n)	Genomes with prophages (%)	Genomes with complete prophages (n)	Genomes with complete prophages (%)	Proportion of complete prophages (%)
hspSWEuropeEAfricaUSA	17	13	76.5	0	0.	0.
hspEurasia2	78	43	55.1	13	16.7	30.2
hspSWEurope	175	64	36.6	24	13.7	37.5
hspSWEuropeChile	43	15	34.9	3	7.	20.
hspAfrica1MiscAmerica	21	7	33.3	1	5.	14.
hspAfrica1NAmerica	57	18	31.6	6	11.	33.
hspAfrica1WAfrica	7	2	29.	0	0.	0.
hspEurasia1	173	50	28.9	21	12.1	42.0
hspSahul	15	4	26.7	2	13.	50.
hspSWEuropeMiscAmerica	111	25	22.5	5	5.	20.
HpAsia2	34	8	23.5	5	15.	63.
hspAfrica1SAfrica	38	8	21.1	5	13.	63.
hspNEurope	50	10	20.0	0	0.	0.
hspEAsia	166	30	18.1	11	6.6	36.7
hspIndigenousAmerica	22	1	4.6	0	0.	0.
HpAfrica2	4	0	0.	0	0.	0.
Total	1011	298	29.5	96	9.5	32.2

Incomplete (or remnant) prophages are the majority (71.5%; 213/298) in *H. pylori* genomes. Out of the 213 genomes containing remnant prophages, 202 have incomplete prophages, while 11 have both complete and incomplete prophages.

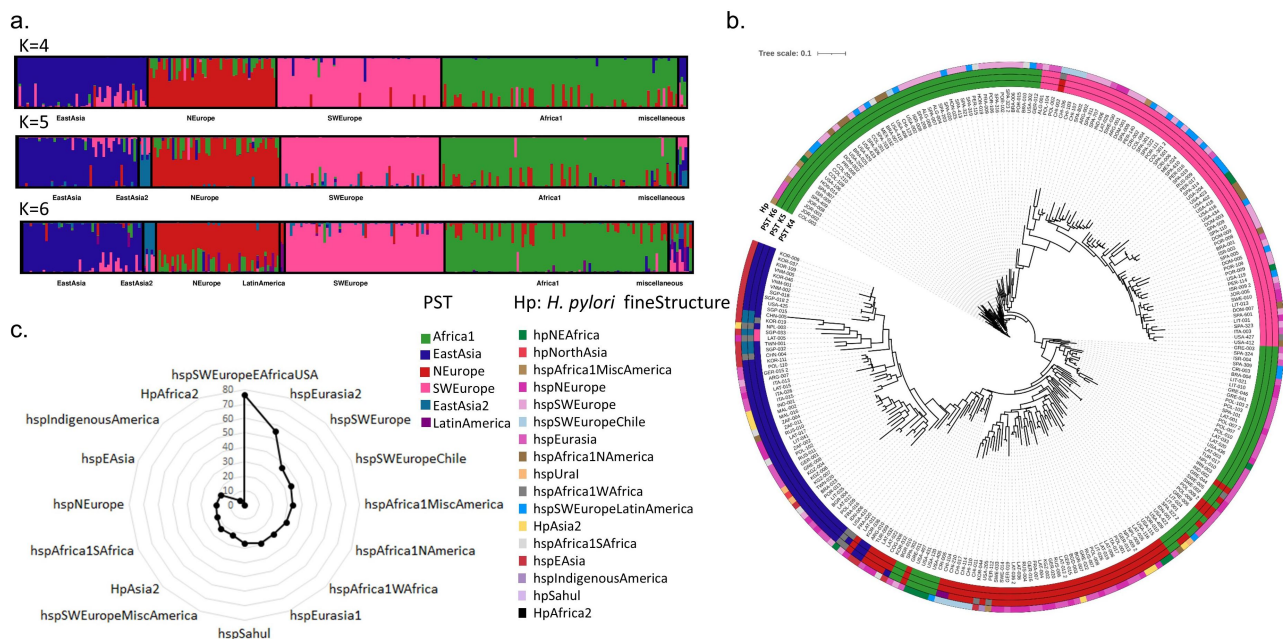


Figure 1. Global overview of *H. pylori* prophage abundance and population structure. (a) Prophage sequence typing (PST) based on the integrase and holin genes. The DISTRUCT plot of the Bayesian population was assigned using STRUCTURE and an admixture model for K populations (K = 4 to K = 6) for 260 genomes containing the prophage integrase and holin genes. Each prophage is represented by a vertical line divided into K colored segments representing the membership coefficients in each cluster. (b) Concatenated integrase and holin phylogenetic tree. Outer circles represent population membership for PST with 4, 5, and 6 populations assigned, and for the *H. pylori* fineSTRUCTURE assigned population. (c) Uneven prevalence of prophage elements by *H. pylori* ancestry ($p < .0001$). The percentage of prophage presence by *H. pylori* fineSTRUCTURE ancestry is indicated by a black line.

that prophage carriage may not have a direct impact on disease outcomes. Furthermore, the occurrence of prophages is not associated with the virulence factor CagA, as annotated by NCBI (Chi-square test p -value = .4254). This suggests that prophage carriage may not have a direct impact on disease outcomes.

H. pylori prophages have a structured population

We previously used prophage sequence typing (PST) based on integrase and holin genes to categorize five phage populations: Africa1, EastAsia, SWEurope, NEurope, and Colombia.^{6,12,25} Despite utilizing just two phage genes, this

approach holds importance due to the common incompleteness of prophage sequences. The higher prevalence of these two genes compared to complete genomes makes the method valuable. PST evaluated 260 prophage sequences, surpassing the 96 complete prophages, enabling the analysis of more prophage sequences. STRUCTURE analysis offers the best K in between 4 and 6 prophage populations. At K = 5, a new EastAsia2 population emerges, encompassing genomes from China, Korea, Singapore, and Taiwan (Supplementary Table S2). At K = 6, the former Colombia population clustered with other prophages from Latin America, leading to a proposed name change to Latin America (Figure 1a). The phylogenetic tree (Figure 1b) based on concatenated integrase and holin genes shows prophage sequences clustering by their PST population. Interestingly, specific *H. pylori* ancestries show nonrandom prophage populations (Figure 1b; Supplementary Figure S2c), corroborating a previous finding.²⁶ For instance, the *H. pylori* subpopulation hspEAsia is mainly lysogenic for EastAsia and EastAsia2 prophage populations, while the only *H. pylori* lysogen from subpopulation hspIndigenousAmerica carries a prophage with NEurope ancestry (Supplementary Figure S2c). This suggests that the introduction of prophages into the hspIndigenousAmerica population (typically found in Indigenous populations) arose after the introduction of *H. pylori* European lineages, reflecting the European colonization of America. Similarly, when analyzing by country of isolation, the same tendency is observable. For instance, Peruvian genomes are lysogens of prophages with ancestries from SWEurope, NEurope and LatinAmerica (Supplementary Figure S2b). No relationship is observable between prophage ancestry and associated disease (Supplementary Figure S2a). These observations point to prophages being more involved in *H. pylori* adaptation to certain geographies, rather than being associated with disease outcome. Each *H. pylori* subpopulation has its own prophage

circulating populations (Supplementary Table S2), and this feature may confer niche-specific adaptation.

Recombination between prophage populations takes place on intra- and inter-population scales

The recombination among prophages provides an opportunity to study their diversity and gene flow and to disclose aspects related to human migrations. We have applied ChromoPainter/fineSTRUCTURE to study the population genetic structure, admixture and recombination across the complete prophages (80 genomes) using genome-wide single nucleotide polymorphism (SNP) data. We have excluded identical prophage sequences (GRE-041 and GRE-046 have highly similar bacterial genomes pointing to the possibility of a strain infecting distinct Greek patients), as well as prophages presenting large genome inversions and cargo genes, since these pose an obstacle to multiple genome alignment. This is observable when contrasting the networks (Supplementary Figure S3a and Figure 2b) obtained with 95 or 80 complete prophages, in which the former shows a rather box-like network, indicating incompatibilities in the data that cannot be explained by a simple tree-like evolution scenario. Also the phylogenetic trees for 95 and 80 complete prophage genomes (Supplementary Figure S3C and Figure 2c) evidence longer branches for prophages carrying inversions and cargo genes, reporting more genetic change or divergence, which, in fact, is attributed to the prophage genome rearrangement or cargo gene presence rather than to a true divergence of the DNA sequence. Additionally, the gene cluster comparison of all prophage regions (Supplementary Figure S4) also allows the detection of rearrangements and cargo genes.

The co-ancestry heatmap (Figure 2a) with unevenly distributed colors shows variation in the number of DNA fragments inferred to be donated by other donor individuals. The principal fineSTRUCTURE split shows SWEurope phage population genetic differentiation (Figure 2a), which is also supported by the network (Figure 2b) and phylogenetic tree (Figure 2c) analyses. This observation suggests genetic isolation, also supported by long branches in the network and phylogenetic tree, confirming previous findings.⁸ In the principal

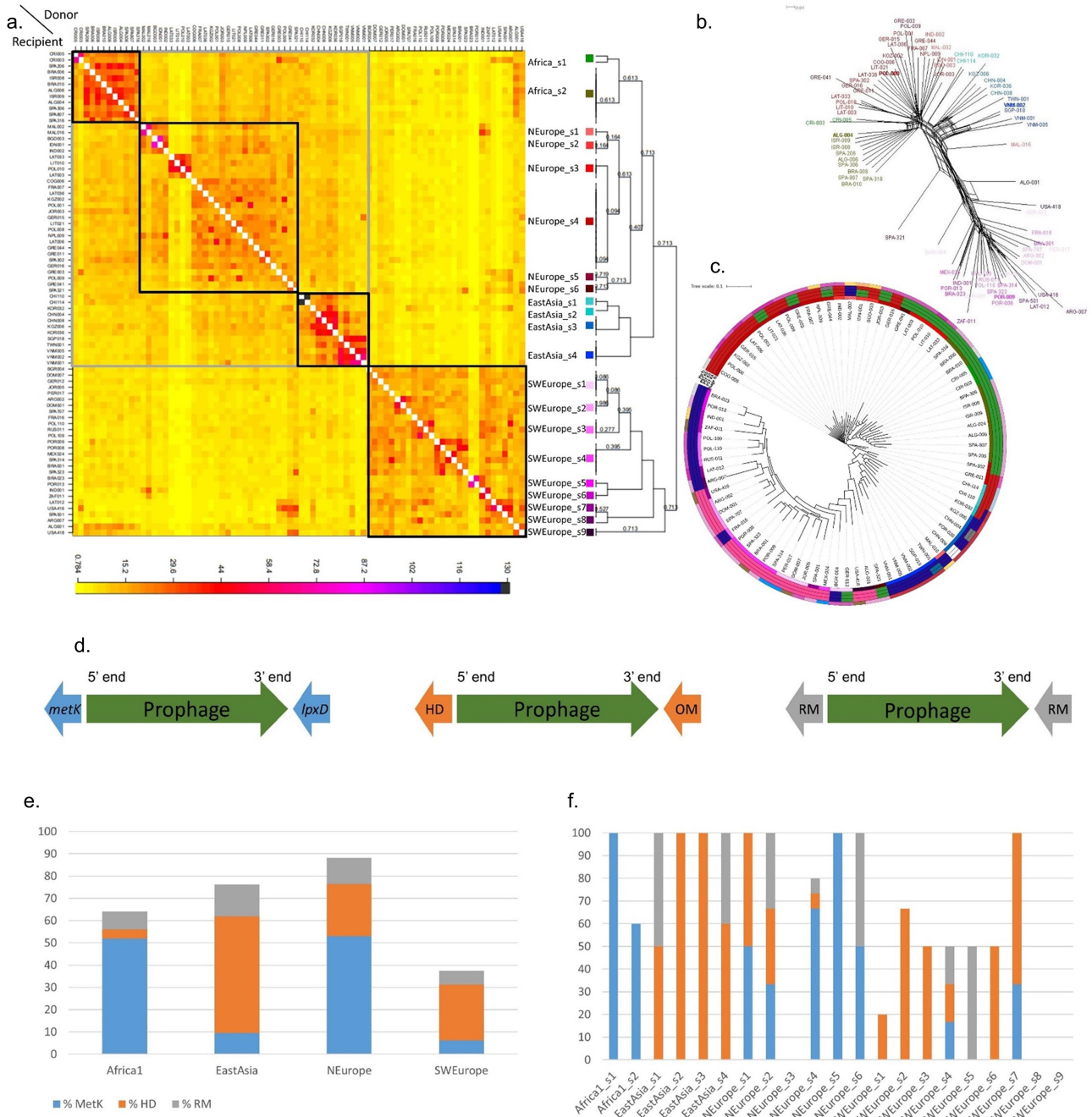


Figure 2. Population structure and phylogenetics of the complete *H. pylori* prophages. (a) Co-ancestry matrix of *H. pylori* prophage genomes. The color of each matrix square represents the expected number of fragments exported from a donor genome (column) to a recipient genome (row), inferred by Bayesian clustering in fineSTRUCTURE. The black and gray boxes indicate evidence of higher recombination between genomes based on the co-ancestry matrix. (b) SplitsTree phylogenetic network reconstructed using the complete genome alignment of 80 complete prophages. Prophage genomes in bold are reference prophage representative of the main populations. Tip colors correspond to those of Figure 2a. (c) Maximum-likelihood phylogenetic trees from complete prophage genome alignment. Circles from inside to outside: phase fs – prophage population determined by fineSTRUCTURE coded as in Figure 2a; PST K4, PST K5 and PST K6 – populations determined by phage sequencing typing (based on integrase and holin) coded as in Figure 1a; Hp fs - bacterial population determined by fineSTRUCTURE. (d) Schematic map of the prophage insertion sites. Prophage sequence is in green evidencing its 5' end (left end) and 3' end (right end). The most common insertion site is found from left to right between the bacterial genes: *metK* and *lpxD* (genes in blue); HD domain and outer membrane protein (genes in orange); and between RM genes (genes in gray). (e) Percentage of prophage insertion sites by PST K = 4, according to site: S-adenosylmethionine synthetase *metK* gene at 5' end (%metK), HD family hydrolase gene at 5' end (%HD), and flanked by restriction and modification (RM) genes (% RM). (f) Percentage of prophage insertion sites as in Figure 2d by fineSTRUCTURE population.

component analysis (PCA), whose first six components explain 44.7% of the variance, SWEurope prophages diverge from others along the first component (Supplementary Figure S3b). Accordingly, the nine sub-groups found within the SWEurope (SWEurope_s1 to SWEurope_s9) population mainly exchange DNA segments among themselves. The other three populations Africa, NEurope and EastAsia present 2, 6, and 4 sub-groups, respectively. These three populations are mainly receivers of DNA segments from individuals of the same population. Still, they also receive DNA segments from individuals of these three populations (i.e., they have signatures of inter-population recombination). It is noteworthy that none of the prophages assigned to LatinAmerica population by STRUCTURE were included in the fineSTRUCTURE analysis, while one prophage from the EastAsia2 population assigned by STRUCTURE (from Taiwan, Supplementary Table S2) corresponds to fineSTRUCTURE EastAsia_s4, the most distant among the EastAsia subgroups. The four main prophage populations also revealed a high degree of differentiation among populations and genetic diversity within populations. Globally, PST, fineSTRUCTURE and PCA revealed a clear prophage population structure. The fine-scale genetic structure detected by haplotype sharing (fineSTRUCTURE) explained substantially more variance in complete prophages than PCA and PST. The recombination signatures found provide prophages with increased diversity, which may help them escape bacterial immunity by recombining with other phages or prophages, and adaptation to new environments/bacterial populations.

Looking at particular prophage subpopulations it was possible to establish links with the human migrations, specially by joining data from isolate country of origin, *H. pylori* ancestry and phage fineSTRUCTURE (Supplementary Table S2). The subgroups SWEurope_s9 (from Algeria and the US) and Africa_s2 (from Algeria, Brazil, Israel, and Spain) exchange DNA chunks between them, meaning that these two distinct prophage populations recombine in Algeria, pointing to the migratory history between the North African region and the Iberian Peninsula, while all isolates from Algeria shared the same bacterial ancestry. American strains often exhibit a mixed population composition resulting from European

colonization, the historical practice of slavery, and frequent migratory movements. A noteworthy observation pertains to the apparent isolation of the SWEurope_s9 subgroup (from Portugal and Brazil), which reflects the shared historical bond between the two countries attributed to the former's colonization. Concerning the East Asian subgroups (Supplementary Table S2), it is worth noting that the subgroups from Southeast Asia (EastAsia_s4: Singapore, Taiwan and Vietnam) and the Far East (EastAsia_s3: China, Kyrgyzstan, and Korea) exhibit more pronounced intra-group recombination in line with their specific geographical locations, to a lesser extent with each other, and distinctly separated from the two other East Asian groups, like EastAsia_s1 from Chile. Regarding NEurope subgroups, s1 (Malaysia) and s2 (Bangladesh, Indonesia, India) extendedly recombine among each other and belong to more close geographic locations. NEurope_s3 essentially recombine among themselves, corresponding to Baltic countries Latvia and Lithuania, and neighboring Poland. The remaining subgroups within NEurope recombine among them stemming from diverse sources, primarily comprising European nations. Finally, Africa_s1 comprises prophages from Costa Rica, and Africa_s2 (Algeria, Brazil, Israel, and Spain) that recombine more among each subgroup. Only a limited number of African prophages are available for tracing the spread of prophages and migrations within this continent.

***H. pylori* prophages have hotspots for integration sites and occasionally disrupt bacterial genes**

H. pylori prophages do present hotspots for integration that are related to the main populations (Figure 2d-f, Supplementary Table S2). The most prevalent insertion spot, found in 27.9% (83/298) of genomes with prophages, is between the methionine adenosyltransferase (*metK*) and UDP-3-O-(3-hydroxymyristoyl)glucosamine N-acyltransferase (*lpxD*) genes, particularly abundant in Africa1 and NEurope prophages (Figure 2d), consistent with a previous study.⁷ When considering only the group of complete prophages analysed by fineSTRUCTURE, there is a confirmation that the subpopulations belonging to Africa1 are exclusively integrated between

these two genes, while the subpopulations from NEurope are predominantly integrated here (Figure 2e). The proteins encoded by these genes catalyze the formation of S-adenosylmethionine (AdoMet) from methionine and ATP (MetK) and are involved in the biosynthesis of lipid A, a phosphorylated glycolipid that anchors the lipopolysaccharide to the outer membrane of the cell (LpxD).

The gene encoding an HD family hydrolase, found in 25.8% (77/298) of the genomes, is the second most common hotspot for prophage insertion, situated at the 5' end of the prophage (left end of the prophage), with a higher frequency in EastAsia and SWEurope prophages (Figure 2e). When considering only complete prophages, the subpopulations determined by fineSTRUCTURE that are most prevalently inserted here are also from SWEurope and EastAsia (Figure 2f). The bacterial gene found at the 3' end of the prophage (right end of the prophage) is not conserved for this hotspot. However, although not entirely conserved, the bacterial gene found on the 3' end of the prophage most frequently present (48 genomes) codes for an outer membrane protein (*homA*, according to Prokka annotation), and the second most frequent (nine genomes) a gene coding for S-adenosyl-L-methionine hydroxide adenosyltransferase family protein.

Another remarkable and novel observation is that prophages often insert adjacent to RM systems (8.1%, 24/298) (Supplementary Table S3). An RM system, a prokaryotic immune system, consists of a DNA methyltransferase, which transfers a methyl group to a specific DNA sequence, and a restriction enzyme, which cleaves DNA lacking that methylation.²⁷ However, these systems are often distinct among genomes, and in these cases, the insertion site is not truly a unique site between the bacterial genomes. We could verify that three of these RM systems appear repeated as insertion sites for prophages.

The conservation of the integration site suggests a specificity of the phage integrase for DNA sequences found at these hotspots. Indeed, the phylogenetic analysis and population structure support the existence of distinct populations of prophages that have characteristic insertion sites, which is also observable for the integrase gene.¹¹

The conservation of the integration site may also reflect prophages being in decay and the presence of vertical transmission of prophages within each *H. pylori* lineage. This scenario could apply particularly to remnant prophages, whose incompleteness hampers phage excision. Inspection of the intergenic regions flanking complete prophages revealed conserved sequences at each integration hotspot, which may constitute the integrase recognition sequences. The intergenic region between bacterial and prophage for complete prophages integrating between bacterial genes *metK* and *lpxD* has, on average, 297 bp (SD, 3 bp). The intergenic region at 5' end (between *metK* and first prophage gene) displays a notably conserved sequence, characterized by two specific conserved segments: TAAGCTATAATAAGCC (at -56 bp from prophage start) and GATTATTTTAATAAGGACAA (at -24 bp from prophage start), that may be important for integrase recognition and prophage insertion. The intergenic region at the prophage 3' end (between the last prophage gene and the bacterial *lpxD* gene) has, on average, 668 bp (SD, 150 bp) and is characterized by repeat sequences (average size of 42 bp, SD of 73 bp) that may result from prophage insertion. Similarly, the intergenic region of the second most common insertion site between HD domain and an outer membrane/hypothetical protein, with 399 ± 57 bp, has three conserved regions upstream prophage start: TTTTAAATAAAA (at -167 bp from prophage start), TTTTTCGTATAATAA (at -138 bp) and CAAAATAGTATAAA (at -24 bp). The intergenic region downstream of the prophage is characterized by shorter sequence repeats, with an average of 10 bp (SD, 32 bp). These repeats may be generated after the integration of prophage into the host genome via recombination.²³

Taking into consideration the insertion sites and the co-ancestry heatmap (Figure 2), there appear to have occurred two hypothetical major prophage prototypes, each with its specific integration site (one integrating adjacent to *metK* and the other to HD domain) that have recombined, giving rise to the other populations. Two hypotheses arise, introducing uncertainty: either SWEurope or NEurope recombined, potentially resulting in EastAsia and Africa1, or an alternative scenario involving a recombination between NEurope and EastAsia, potentially giving rise to SWEurope. The

recombination opportunity may have arisen from simultaneous infection of the same bacterial genome by these prototypes; or by the presence of mixed *H. pylori* infections of the human host. Giving strength to the former, we found two distinct genomes (LAT-012 and NPL-009) where a complete and a remnant prophage appear at these two conserved insertion sites, proving an opportunity for recombination. In the case of NPL-009, both prophages belong to the NEurope population and are identical in their sequences. However, LAT-012 prophages belong to distinct prophage populations; the complete prophage is inserted adjacent to the HD domain gene within the SWEurope_s7 population, whereas the remnant belongs to NEurope and is inserted adjacent to the *metK* gene. This LAT-012 remnant prophage has signs of multiple rearrangements dispersed across two bacterial genome sites. One segment of the remnant prophage is adjacent at its 5' end to the *metK* gene and merges at its 3' end with a *tfs* region. Meanwhile, the other segment of the remnant prophage is positioned approximately 650 kilobases apart, next to the *lpxD* gene.

Gene disruption upon insertion is among the factors that render prophages non-neutral to bacteria. Disrupted genes are detectable adjacent to 14.8% (109/[96 + 272]x2; among the 736 genes flanking prophages, 109 are pseudogenes) of all *H. pylori* prophage insertion sites (Supplementary Table S4). Whether prophage excision leads to gene integrity restoration remains to be determined. Most disrupted genes are hypothetical proteins, followed by RM genes, a gene class known to be variable among *H. pylori* genomes.²² Noteworthy, among the examined bacterial genomes, the *H. pylori* genome carries the largest number of RM genes.²⁸ The repertoire of RM systems and other sequence-specific DNA methyltransferases in *H. pylori* is strain-specific and variable, forming a unique and ever-changing methylome.^{22,29,30} *H. pylori* provided a unique opportunity to understand the interaction between these epigenetic systems and prophages. Indeed, 62.5% (15/24) of the prophage genomes flanked by RM genes present RM disruption, disrupting bacterial genomic methylation (Supplementary Table S3). Disrupting methyltransferase genes altered the phenotype, evaluated by the epigenomic methylation found in the genome (i.e., the

methyltransferase recognition target site was not methylated). Whenever a methyltransferase gene was disrupted by prophage insertion, the methyltransferase recognition target site was not methylated (genomes GER-001, IDN-001, ITA-026, LIT-041, POL-007, POL-102, POL-103, POL-104, POR-013, SGP-018, SPA-301, SPA-709, SPA-801, USA-427), unless a second methyltransferase recognizing the same target site is present (genomes DOM-009, GRE-041, SPA-323, USA-422, USA-434 and VNM-002, in Supplementary Table S3). Concerning the disruption of the companion endonuclease alone, in half of the cases the methylation is present (DOM-009, IDN-001 and USA-422) and absent in the other half (BGR-007, POL-007, and USA-429). Of note, not for all cases of RM system disruption it is possible to verify if there is a phenotypic alteration, like when the target methylation site is undetermined or when there are constraints related to decoding 5-methylcytosine using PacBio sequencing. The RM system disruption by prophages suggests a mechanism to counteract host immunity, and another form of interplay between mobile genetic elements, where prophages are acting as epigenetic switches. Moreover, the disrupted gene list also reveals a set of genes whose loss of function is not essential for cell survival. Here, we have verified that prophage integration can disrupt host genes, but prophage excision may eventually reverse this disruption.³¹

H. pylori complete and remnant prophage present genome synteny

The synteny of gene cassettes is often conserved between different phages, especially among bacteriophages of small genome size, presumably representing a feature of bacteriophage evolution.³² Both complete and incomplete prophages presented a well-conserved pattern of genomic organization and synteny (Supplementary Figure S4). In terms of gene organization throughout the prophage genome, gene order is kept among prophage even across distinct populations, pointing to i) distinct prophage populations sharing a common evolutionary lineage; ii) these genes being essential for phage function and being conserved over time; iii) for the importance of the gene order in regulation; and iv) its role in governing the phage life cycle.

H. pylori genome rearrangement split prophage sequences leading to prophage remnants

An open question regarding *H. pylori* prophages concerns the existence of polylysogeny (i.e., carrying multiple prophages). Prophage fragmentation makes it challenging to determine the existence of polylysogeny. We found 20.5% (59/298) of *HpGP* genomes harboring multiple prophages, considering both complete and incomplete. Of these 59 genomes, 49 had two regions, nine had three, and one had four. In most (49) genomes, these prophage regions correspond to prophage fragmentation by the bacterial chromosome, rather than the presence of distinct prophages. In 15 genomes, however, there is indeed more than one prophage present.

Noteworthy, in five of these 15 genomes (LAT-012; POL-007, SPA-322, LAT-036; POL-009), there is both a prophage genome split and more than one prophage. In the case of prophage fragmentation, the regions of the prophage appear scattered by the bacterial genome, whether all prophage pieces are still present. Often not all pieces that make a complete prophage appear to be present. We hypothesize that the rearrangement by inversion within the prophage genome (Figure 3a), or by the *H. pylori* genome rearrangement involving prophage regions (Figure 3b) leads to prophage remnants. The rearrangements involve inversions, transpositions, and duplications (Figure 3b,c). These genome rearrangements involve dispersing just the prophage regions (Figure 3b), or prophage regions and bacterial regions that are usually present in synteny blocks (Figure 3d). Prophage inactivation by prophage genome rearrangement may constitute a new strategy of host defense leading to prophage decay, where the rearrangements pulverize prophage segments across the genome, and later, some may be lost. Indeed, in most genomes we observe prophage remnants (213/298). Of these, 11 genomes have completed and other fragmented prophages, and 202 have only incomplete prophages.

Interestingly, prophages often break in two halves with the breaking point being in a prophage gene with high homology to bacterial genes (DUF3519 domain, DNA binding chromosome segregation), pointing to a genome rearrangement generated by homologous recombination involving DNA sequences with near identical sequences, one bacterial and the other from a prophage.

Concerning the 15 polylysogenic genomes, in six there is a (partial) prophage duplication, meaning that only nine cases had vestiges of polylysogeny. In all polylysogenic genomes, the combinations found were complete and remnant(s) prophages, or only remnant prophages, with dot plots showing the absence of sequence homology (genomes GER-015, LAT-012, ISR-009, POL-007, SPA-322, SPA-323, POL-103, COL-301, and SPA-707), pointing to distinct prophages. In none of the cases, two distinct complete prophages were found, pointing to prophage mediated superinfection exclusion, either by prophage insertion site occupancy, or the presence of a prophage regulator preventing infection by the same phage. There are two hypothetical prophage repressor genes (see below) commonly present in complete prophages, which may be associated with superinfection exclusion. Interestingly, when there is more than one distinct prophage per genome, in no case were the two repressors observed in all the prophages present (i.e., at least one of the prophages did not have these repressors). Our data indicate the absence of true polylysogeny in the *H. pylori* genomes. Small bacterial genomes generally have a low co-occurrence of prophages,³³ as is the case of *H. pylori*.

Prophage can merge with other mobile elements

Interestingly, we often observed the merging of prophage sequences with other mobile elements (Supplementary Table S5). The most common pattern involved insertion sequences, found integrated in the prophage in 48% (145/298) of the genomes. Insertion sequences may disrupt the gene regulation within the prophage sequence, impacting the phage life cycle. Additionally, prophages merged with a Type IV secretion (*tfs*) cluster were found in 10% (34/298) and, less frequently, with *cag* pathogenicity island (PAI) in 3.4% (10/298) of the genomes. The convergence of mobile elements may disrupt *cagPAI* and *tfs* by prophages, and vice-versa. Typically, prophages were found adjacent to *cag4* or *cagS*. The former is known to be a splitting point of *cagPAI* into a right segment (*cagI*) and a left segment (*cagII*), usually split by insertion sequences, which provide intermediate pathogenicity phenotypes.³⁴ Here, we

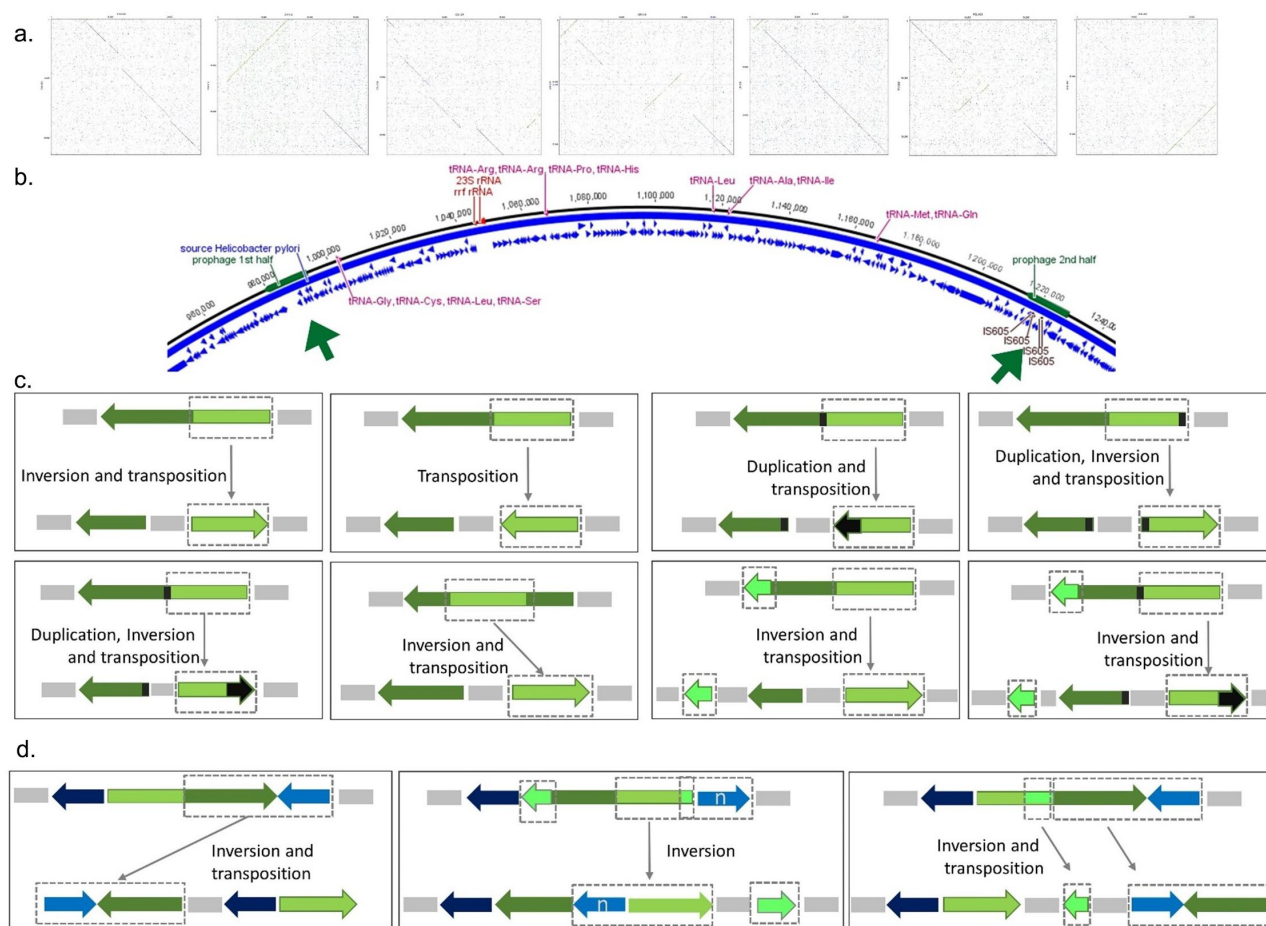


Figure 3. Prophage inactivation by genome rearrangement in 298 complete genomes. (a) Prophage genome inversion (present in 13; 4.4%) as shown by dotplots of 7 complete prophages with inversions, depicted as green lines in perpendicular directions. (b) Prophage split into two fragments across the bacterial genome, represented as green boxes and arrows (present in 49; 16.4%). (c) Schematic representation of prophage genome rearrangement involving inversion, transposition and/or duplication (present in 32; 10.7%). (d) Schematic representation of the case of bacterium and prophage genome rearrangement implying inversion and/or transposition (present in 17; 5.7%).

show for the first time that prophages can also split *cagPAI*. Prophages may contribute as well to remnant *tfs* plasticity zone, a region that is important for the colonization of *H. pylori* and disease progression.³⁵ When merged, mobile elements lose their typical gene order, and can together be vertically transmitted by cell division, gained and/or lost, as well as to impose intermediate phenotypes, regarding the pathogenicity of the strain. Merging with other mobile elements changes the genomic organization of prophages, probably disrupting their gene regulation. This may constitute a weapon in the phage-bacteria arms-race.

Remnant prophages contribute to the expansion of the pangenome and exhibit greater levels of pseudogenization

Considering complete and incomplete prophage regions, the phage pangenome comprises 147 genes (Supplementary Table S6), including cargo genes (see below). Out of these, 57 (38.8%, 57/147) are hypothetical proteins, adding complexity to *H. pylori* bacteriophage biology understanding. The high genetic diversity within *H. pylori* prophages is reflected in the proportion of genes with unknown functions. Within the pangenome, some genes are shared with integrative elements, like

type IV secretion proteins, that may have arisen from merging distinct mobile elements (see above). None of the genes is shared between all prophages, which was expected since remnant prophages were included. Focusing solely on the complete prophage group, we identified a pangenome of 107 genes. Among these, nine genes were present in at least 90% of the prophages (Figure 4a), with a decreasing proportion of hypothetical proteins (28.0%, 30/107). We cannot disregard that the high genetic diversity of sequences observed may contribute to identifying them as different genes, even if they code for proteins with a similar function, as is observed for insertion sequences within prophages.

Pseudogenes, often considered nonfunctional relics of once-active genes, can arise through various processes, such as gene duplication, genomic rearrangements, population bottlenecks, and genetic drift.³⁶ These nonfunctional genes accumulate mutations over time that disrupt their ability to be transcribed or translated into functional proteins. The proportion of pseudogenes per 30kb genome segment was significantly higher among prophage genes, either complete (average 2.51; SD, 2.21; IQR, 2.86 pseudogenes/30kb) or incomplete (5.64; SD, 10.02; IQR, 8.64), than within bacterial genes (1.41; SD, 0.26; IQR, 0.31; Mann-Whitney U-test p-value <.0001, respectively). These pseudogenes carried internal stop codons, possessed frameshift mutations, and/or were incomplete. An increased presence of pseudogenes in the mobile genetic pool has been previously observed as well.³⁷ Moreover, the proportion of pseudogenes is also significantly higher in incomplete than in complete prophages (Mann-Whitney U-test p-value <.0001). This observation suggests that *H. pylori* prophages suffer pseudogenization, which may hamper switching toward a lytic cycle and prophage arrest within the bacterial genome. This is compatible with the reductive evolution of the vertically inherited prophage regions, being even more evident in prophage remnants. An increased presence of pseudogenes has been found in intracellular bacteria that rely on exploiting host metabolites.^{37,38} A parallel with intracellular bacteria can be made for prophages that benefit from host replication for propagation. Pseudogenization may be a way to purge prophages from the bacterial genome, first these regions get

retained (no longer able to follow a lytic cycle), but ultimately leading to gene deletion and genome reduction. The link between pseudogene prevalence and prophages could be affected by confounders like the dynamic nature of genomes and the potential of gene reactivation, underscoring the need to address these factors in future research.

Prophage gene function provides clues to a model for lytic and lysogenic cycles

Based on the observed architectural genome synteny organization and the prediction of gene function of the 147 pangenome genes, we developed a model for the regulation of lytic and lysogenic cycles (Figure 4, Supplementary Figure S5, Table S6). Two prophage coding sequences toward the 5' end of the prophage genome had homology with the MarR-like family of transcriptional regulators, placed downstream of the integrase gene, further pointing to a role in the lytic/lysogenic switch (genes #5 and #7, alias for genes numbered gff.5 and gff.7 in Supplementary Table S6). Members of this transcriptional regulator family are usually dimers that respond to chemical signals and stresses, converting them into changes in gene activity.³⁹ We hypothesize that these MarR like transcriptional regulators may govern lysogenic and lytic cycles by binding to AT-rich palindromic motifs (which were found in prophage genomes near promoter regions), repressing transcription and controlling RNA polymerase expression of the genes under the control of these promoters (Figure 4), favoring the lysogenic cycle. In contrast, when MarR is not expressed in sufficient amounts, or is inactivated, it may lead to the lytic pathway. Importantly, the control of lysogeny by a MarR like repressor (localized upstream of the integrase gene) has been proposed for a T7-like prophage exhibiting a lysogenic cycle.⁴⁰ Another key player in the induction of the lytic cycle appears to be a putative histidine kinase (HK)-like protein (Supplementary Table S6, gene #18). We propose that stimulation by HK may induce its autophosphorylation. The HK may act as the primary sensor, transferring the phosphate to other transcription factors to directly regulate the expression of a series of genes required for the lytic cycle. The putative phosphorylation of MarR-like transcriptional regulator (probable Cys-phosphorylation of MarR encoded by gene #5,

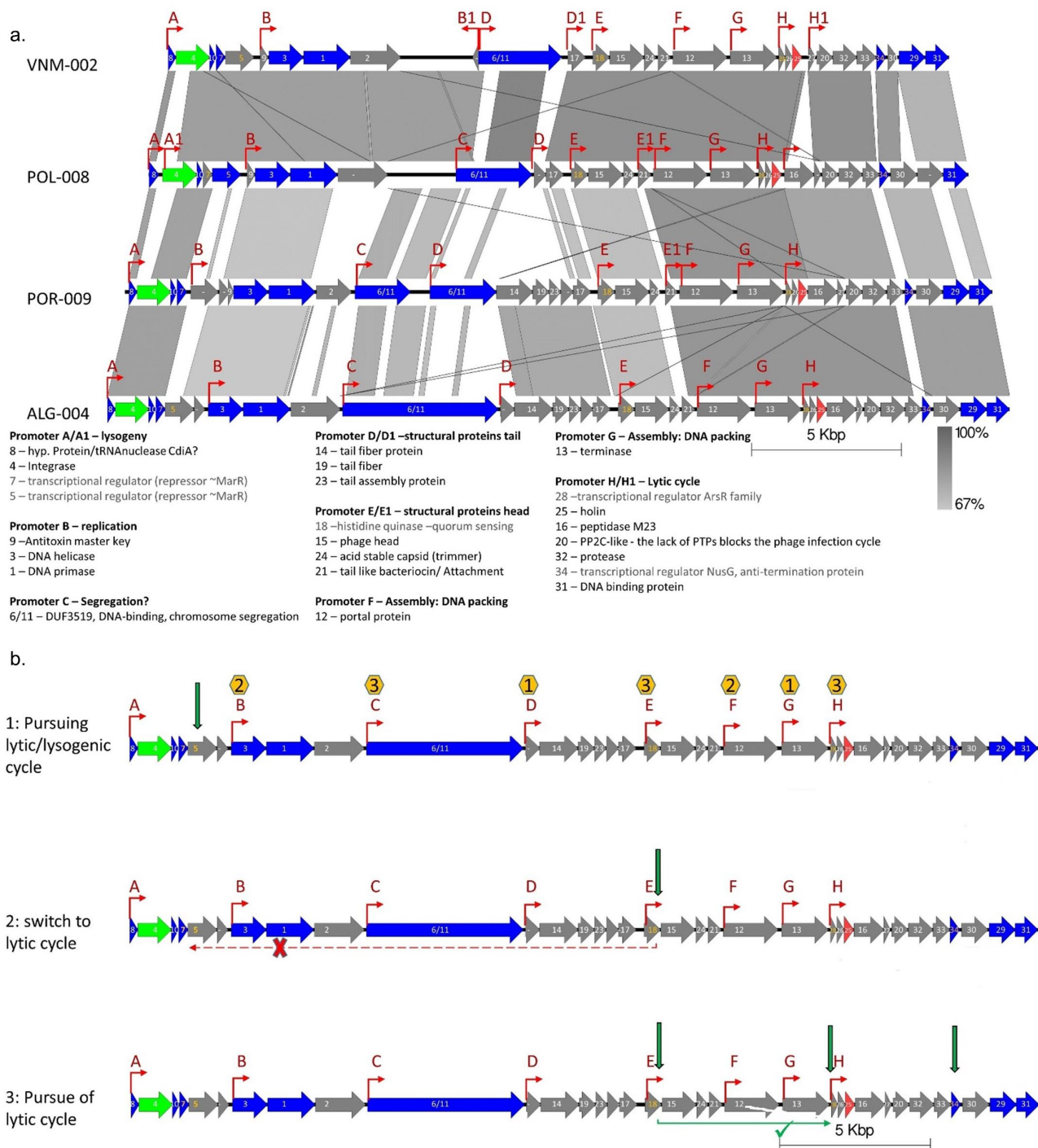


Figure 4. Proposed mechanism for lysis/lytic cycle regulation in *H. pylori* prophages. (a) Gene cluster of complete prophage references representative of the four main prophage populations (bold tips in Figure 2b), VNM-002 – EastAsia, POL-008 – NEurope; POR-009 – SWEurope; ALG-004 – Africa. Genes are color coded (Green – integrase; red – holin; blue – core ($\geq 40\%$ identity with presence in $\geq 90\%$ of complete prophage genomes; integrase also within this group); gray – other genes). The predicted promoters are depicted with red arrows and coded with letters. The predicted gene function is shown (Grey letters for transcriptional regulators). (b) Schematic of proposed lytic and Lysogenic cycles, based on representation of the ALG-004 prophage genome. 1: Choosing between lytic/lysogenic cycles upon infection. The repressor MarR regulates the events governing lysogeny versus lytic cycle, hypothetically binding to an AT-rich palindromic motif. The yellow hexagons contains the number of TTAA sites in the promoter region, where MarR can potentially bind, impeding gene transcription under the control of these promoters, leading to lysogeny. When MarR is not expressed in sufficient amounts, or is inactivated leads to the lytic pathway. MarR may also prevent infection by the same phage. 2: Switch to the lytic cycle. The putative histidine kinase (HK) hypothetically receives a stimulus (green arrow), inducing autophosphorylation of HK. The HK acts as the primary sensor, then the phosphate is transferred to other transcription factors to directly regulate the expression of a series of

which contains eight cysteine residues susceptible to phosphorylation or His-phosphorylation of the nine histidine residues; and gene #7, containing four cysteine residues) may inactivate the repressor leading to the lytic cycle. Usually, HK is involved in signal transduction across the cellular membrane by phosphotransfer and phosphatase activity. This HK-like enzyme may induce the host to phosphorylate other response regulator, changing gene expression. An HK-like gene associated with a quorum sensing system has been reported in a *Clostridium difficile* prophage.^{41,42} Thus, an HK-like gene may be involved in a quorum sensing mechanism just leading to phage release in the presence of neighboring cells in sufficient numbers to be infected. An argument favoring the association of phage induction and quorum sensing is that a high concentration of a susceptible host increases the advantages of phage lysis. High cell density detection by quorum sensing has been shown to play a role in prophage induction, either increasing,⁴³ or decreasing⁴⁴ it. A third ArsR-like transcriptional regulator, which is a response regulator (Supplementary Table S6, gene #28) may regulate late gene expression. The phosphorylated ArsR-like may control the transcription of genes beyond their baseline levels. A last regulator was identified, a NusG-like, similar to the N protein in phage λ (Supplementary Table S6, gene #34). The genes under the control of the transcriptional regulator NusG-like, including the lysis-cassette genes that lead to the bacterium lysis at the end of the lytic cycle, may have accelerated transcription elongation rate by suppressing specific transcription pause sites.

Other relevant genes unrelated to the switch of lytic/lysogenic cycle were also identified, remarkably with a gene organization based on function: lysogeny; replication; genome segregation; phage structure; phage assembly; genome packing; and cell lysis (Figure 4). In the lysogenic module, the integrase and MarR-like transcriptional regulators are found; the replication module presents a DNA helicase and

a DNA primase; the segregation module presents a chromosome segregation protein with a DUF3519 domain identical to a bacterial gene (see above), which may be relevant for equipartition of episomal phages during cell division. Indeed, *H. pylori* has a homologous bacterial gene, and often incomplete prophages are fragmented at this gene, frequently occurring genome rearrangement at this gene level, pointing to homologous recombination between phage and bacterial genes. Two assembly modules follow, and noteworthy phages from SWEurope and Africa present more features (Supplementary Figure S5) with homology with structural phage proteins. These may explain the smaller phage tail length observed for phages like KHP30²⁴ (EastAsia) than for phiHP33¹¹ (Africa1). Finally, the lysis module presents the genes associated with cell burst and progeny release.

H. pylori prophages have a small but relevant cargo gene repertoire

A prophage cargo gene is a gene within its genome that is not necessary for phage replication, assembly or virion structure. These genes, which can involve toxin production, antibiotic resistance, or metabolic pathways, may provide benefits to either the host bacterium or the phage itself. We could identify cargo genes within prophage sequences, even in complete prophages (Supplementary Table S7). These cargo genes are not essential for the function of the phage, but were present within the prophage element. The cargo genes include *tfs* genes; toxin-antitoxin systems; methyltransferase (an N-6 DNA methylase); or bacterial gene blocks. Of note, several prophage coding regions are identified as hypothetical proteins, and we must not dismiss that some of these may also constitute cargo genes that introduce novel properties to the phage and bacteria. The *tfs* plasticity zone clusters have been

genes required for the lytic cycle. The putative phosphorylation of MarR (probable cys-phosphorylation of MarR encoded by gene 5, contains 8 cysteine residues susceptible to phosphorylation) may inactivate the repressor leading to the lytic cycle. 3: The full lytic cycle. The ArsR transcriptional regulator (homo-dimer) may regulate late gene expression. Phosphorylated ArsR may control transcription of genes beyond their baseline levels. The genes under the control of the transcriptional regulator NusG (including the lysis-cassette genes that lead to the bacterium lysis at the end of the lytic cycle) may have accelerated transcription elongation rate by suppression of specific transcription pause sites (green arrows).

described as a virulence factor.³⁵ Thus, the *tfs* cargo genes may contribute to the virulence of the strain. Toxin-antitoxin systems have only been briefly described in *H. pylori*,⁴⁵ and are here described for the first time in the context of the prophage genome as the most common cargo gene. Toxin-antitoxin systems are prevalent in bacterial chromosomes and plasmids, serving various functions that span from stabilizing plasmids to facilitating biofilm formation and promoting bacterial persistence. In these systems, the toxin's harmful effects are neutralized by the presence and activity of an antitoxin, which can be either an RNA or a protein.^{46–48} The presence of toxin-antitoxin may produce a post-segregational killing effect, favoring prophage maintenance. This phenomenon has been reported for *Escherichia coli* prophage P1.⁴⁹ When these addiction genes are lost, the cell's reservoir of antitoxin diminishes, enabling the toxin to exert its harmful effects on the cell.⁵⁰ The bacterial gene blocks within a prophage genome sets the stage for phage transduction in *H. pylori*, in which bacteriophages transfer genetic material from one bacterium to another. This bacterial gene block appears to have resulted from a prophage genome inversion. Phage cargo genes can play a critical role in bacterial evolution, as they facilitate the exchange of genetic information between different bacterial strains, and may contribute to bacteria adapting to new environments and acquiring new traits.

Conclusion

In this study, we have meticulously characterized the prophages of *H. pylori* within the high-quality HpGP dataset. Prophage genes were more common than previously reported (29.5%) but decreased to about a third (9.5%) for complete prophages. *H. pylori* prophages present specific populations, thus shaping bacterial ecology. Prophage prevalence varies with geography and *H. pylori* ancestry, representing a complex interplay of ecological,

evolutionary, and genetic factors. The HpGP set revealed that prophage sequences are often fragmented and scattered across the *H. pylori* chromosome. This dispersion of prophage elements due to bacterial genome rearrangement disrupts the typical and likely essential modular organization required for the prophage to complete a lytic cycle. Likewise, merging with other mobile elements also disrupts sequences. These prophage genome rearrangements, merging with other mobile elements, and pseudogenization appear to be new players in the arms race between bacteria and phage. While functional annotation is challenging for phage genes, our analysis successfully determined the gene function for 61.2% of the prophage pangenome, which consists of 147 genes. Notably, this included key genes that enabled the formulation of an in silico-derived hypothesis regarding the switch model between lysis and lysogeny. This publicly available prophage catalog, together with its annotated pangenome, provide a necessary foundation for future experiments to untangle prophage evolution, ecology, function, regulation, phage–host interaction, and potential application in phage therapy.

Material and methods

Sample acquisition

Our analysis was based on 1011 *H. pylori* genomes from the HpGP, which represent 50 countries. The sample acquisition details as well as bacterial isolation, DNA extraction, library preparation, SMRT/PacBio sequencing, data QC, and *de novo* assembly can be found in the study conducted concurrently with the present work.⁵¹ The HpGP includes 12 countries from which no *H. pylori* genome sequences have previously been published. Collecting material from diverse geographical regions poses significant logistical challenges, and while sample groups could ideally be more diverse, the inclusion of 1011 genomes from the HpGP represents the best possible representation given these constraints.

Prophage identification

Prophages were identified in the genomes using the default options of BLASTn,⁵² and previous *H. pylori* identified prophages²⁵ as a query. BLASTn between the prophage query and the bacterial chromosome identifies sequences with homology. However, due to sequence variability, this matching is not always correctly delimited in the bacterial chromosome. Thus, all hits were manually investigated so that the prophage region could be delimited, independently of query cover since we were also targeting incomplete prophages. The coding regions upstream and downstream of the identified regions were investigated using BLASTn against the nucleotide database until genes of bacterial origin were found, thus delimiting the prophage region. To perform the manual curation, the sequence flanking the prophage on each side is investigated by analyzing the following genes to verify whether they were bacterial or phage-related, using BLASTn against the nucleotide database of NCBI. If the analyzed genes are found to be phage-related, they are added to the prophage; otherwise, they help in delimiting the prophage within the bacterial genome. This was done until we found a bacterial gene that delimits the prophage sequence. To ensure that this bacterial gene was not a cargo gene among other bacterial genes, we verified the absence of another prophage in the immediate vicinity, as well as the gene order of the prophage, since prophage present genome synteny (by visualizing the annotated prophages in the Geneious 8 software). This analysis was performed for the two insertion sites of the prophage at the 5' and 3' ends. Additionally, using the annotated genome files a search for specific bacteriophage protein annotations were performed, using the keywords, "capsid," "virion," "lysine," "holin," "tail," "structur*," "integrase," and "portal." The hits were investigated using BLASTn and BLASTp and the prophage regions delimited. Furthermore, to verify for the presence of novel prophages without homology to the query used or the word search, we have used the phage detection algorithm PhiSpy,¹⁹ which is designed for *de novo* discovery of phage regions. *H. pylori* prophages described as complete typically have a size over 20 Kb, whereas remnant prophages have sizes much lower than this cutoff.

Contiguous prophage regions longer than 20 kb with a prophage gene composition delimiting the sequence were marked as complete; while those with shorter sequences, or absence of phage genes delimiting the sequence, or situations where most genes were not phage-related were labeled incomplete. The locus tag of the bacterial genes at 5' and 3' ends delimiting the prophages were registered to evaluate integration site predominance. Python libraries numpy, matplotlib and scipy were used for box-plot, linear regression, chi-square or Fisher's exact test, and the Mann-Whitney U-test determination (genome size; GC content; number of pseudogenes identified during annotation). Certain assumptions of linear regression models, such as normality and homogeneity of residuals, as well as linearity for quantitative predictors, were evaluated using the Shapiro-Wilk test. We have done the Shapiro-Wilk test to evaluate the normality assumption, and Levene's test to assess the equality of variances among the groups, before proceeding with either Fisher's exact test or the independent t-student test.

Prophage populations and phylogenetic analysis

Prophage sequences containing concatenated integrase and holin genes, as well as complete prophage genomes, were aligned utilizing MAFFT version 7⁵³ with default settings. Maximum-likelihood phylogenetic trees were generated from nucleotide alignments through fasttreeMP 2.1.11.⁵⁴ The Interactive Tree Of Life⁵⁵ was employed for the visualization and annotation of the resultant trees. Furthermore, a phylogenetic network concerning complete prophages was constructed using SplitsTree 4.10 software.⁵⁶ This software serves as a robust tool for depicting both conflicting and coherent information contained within a dataset.

We inferred the prophage population using the integrase and holin genes to run STRUCTURE,^{6,57} using the admixture model and 30,000 iterations, preceded by a burn-in phase of 30,000 iterations. Multiple runs were executed for values of $2 \leq K \leq 9$, and comparisons were made based on the highest

mean log-likelihood values obtained. Utilization of these two genes for population determination enabled the incorporation of both complete and incomplete prophages that possess them.

For the complete prophages the population structure was determined using chromosome painting and fineSTRUCTURE algorithms as previously described.⁸ Genome-wide SNPs, extracted with SNP-sites,⁵⁸ were grouped into segments using a co-ancestry matrix, detailing the count of segments from each donor to each recipient. ChromoPainter (version 0.04) conducted the chromosome painting algorithm individually for each recipient. Subsequently, fineSTRUCTURE (version 0.02) underwent 100,000 iterations of burn-in and Markov Chain Monte Carlo to cluster individuals based on the co-ancestry matrix.⁵⁷ Also, for complete prophage genomes, the genetic diversity assessment among the prophage populations determined employed the PopGenome package⁵⁹ within R. This involved calculating F_{ST} (fixation index) to assess genetic structure and quantify inter-subpopulation genetic variation within the overall population, determining nucleotide diversity for gauging polymorphism in both groups, and using Tajima's D statistics to identify deviations from neutrality. Furthermore, a PCA was conducted using the function `glPca` from the `adegenet` package⁶⁰ in R.

Prophage pangenome and functional annotation

The prophage pangenome was determined using Roary,⁶¹ as previously described,⁸ setting `-i` (the minimum percentage identity of the shorter length for BLASTp) to 70. Each protein sequence of the pangenome was investigated for its three-dimensional structure using AlphaFold2⁶² with default parameters for monomer assembly, Phyre2⁶³ and SwissModel.⁶⁴ BLASTp and Pfam searches were conducted as well for the protein sequences. Globally, this analysis gave insight into protein function, which is of paramount importance concerning the high number of coding sequences identified without attributed function. Phage promoters were predicted using PHIRE.⁶⁵ GO terms were determined to provide structured controlled ontologies describing fundamental

characteristics of gene products.⁶⁶ RM system annotation and epigenetic details can be found at REBASE.²⁸ According to the Pacific biosciences white paper on base modifications, PacBio sequencing is very good at finding the chemical modifications at N6-adenine and N4-methylcytosine that occur on DNA molecules, but has great limitations decoding 5-methylcytosine.

Genome synteny and rearrangement analysis

The genome synteny was visualized with EasyFig⁶⁷ and `clinker`.⁶⁸ Additionally, during manual delimitation of prophage sequences any observed genome rearrangement, like inversions, were registered. Dot-plots of particular genes or regions were constructed using Geneious version 8.

Contributions

Manuscript conception and design: FFV, MCC and CSR. Data analysis: FFV, RJR, and IK. Interpretation of results: FFV, RJR, IK, MCC, CSR. Manuscript writing: FFV. Data coordinator: Difei Wang. Editing of the manuscript: *HpGP* Research Network, RJR, IK, MCC, and CSR. Sample acquisition: *HpGP* Research Network. Conception, design, and coordination of the *HpGP*: MCC and CSR.

Acknowledgments

Our special thanks are extended to all the individuals who were the hosts of the *HpGP* strain collection, who represent the human populations that bear the burden of *H. pylori*-associated disease, and whose biological samples serve to advance research aimed at reducing this disease burden.

Disclosure statement

RJR works for New England Biolabs, a company that sells research reagents, including restriction enzymes and DNA methyltransferases, to the scientific community. JPG has served as speaker, consultant, and advisory member for or has received research funding from Mayoly, Allergan, Diasorin, Gebro Pharma, and Richen. EB-M has served as a speaker and consultant for Janssen, Chiesi, Kern and Takeda, and RMF, JCM, and CF own patent WO/2018/169423 on microbiome markers for gastric cancer.

Funding

The *HpGP* was mainly supported by the Intramural Research Program from the US National Cancer Institute (NCI), National Institutes of Health (NIH). This work was supported in part by the intramural research programs of the US National Library of Medicine, the US National Institute on Minority Health and Health Disparities, and the US National Institute of Allergy and Infectious Diseases. FFV is funded by Fundação para a Ciência e a Tecnologia (FCT) through project grants (project PTDC/BTM-TEC/3238/2020 and CPCA-IAC/AV/478719/2022) that partially supported this work, alongside national funds from FCT projects UIDB/04138/2020, UIDP/04138/2020, and UIDB/04046/2020 (DOI: <https://doi.org/10.54499/UIDB/04046/2020>). The collaborating centers for sample collection received grant support from the US NIH (P01CA116087, R01CA077955, R01DK058587 and P30DK058404 to R.M.P.; P01CA028842 and R01CA190612 to K.T.W.; P01CA028842, R01CA190612, K07CA125588, R03CA167773 and P30CA068485 to D.R.M.; K08CA252635 to R.J.H., K22CA226395 to M.G.-P.; and U54GM133807 to M.C.-C.), the German Federal Ministry of Education and Research (BMBF-0315905D, ERA-NET PathoGenoMics to P.M.), the French Association pour la Recherche Contre le Cancer (8412 to F.M.), the French Institut National du Cancer (07/3D1616/IABC-23-12/NC-NG and 2014-152 to F.M.), the Canceropole Grand Sud-Ouest (2010-08-canceropole GSO-Universite Bordeaux 2 to F.M.), the Japanese National Institutes of Health (DK62813 to Y.Y.), the Japanese Ministry of Education, Culture, Sports, Science, and Technology (18KK0266, 19H03473, 21H00346 and 22H02871 to Y.Y.), the National Fund for Innovation and Development of Science and Technology from the Ministry of Higher Education Science and Technology of the Dominican Republic (2012-2013-2A1-65 and 2015-3A1-182 to M.C.), the National Cancer Center of South Korea (2210630, I.J.C.), ArcticNet (RES0010178 to K.J.G.), the Network of Centres of Excellence of Canada, the Canadian Institutes for Health Research (MOP115031 to K.J.G.), Alberta Innovates Health Solutions (201201159 to K.J.G.), the University of Malaya-Ministry of Higher Education (UM.C/625/1/HIR/MOHE/CHAN-02 to J.V.), the Ministry of Science and Technology of Vietnam, the Kyrgyz State Medical Academy, the Italian Ministry of Health for Institutional Research, the Chilean National Fund for Health Research and Development (FONIS A19/0188, FONDECYT 1230504 and ANID-FONDAP 152220002 to A.R.; ANID-FONDAP APOYO 1523A0008CONICYT-FONDAP and FONDECYT 1231773 to A.H.C.), the Chilean Cancer Prevention and Control Center, the Horizon 2020 Programme of European Union (825832, “CeLac and European consortium for a personalized medicine approach to Gastric Cancer,” LEGACy, to T.F.-K. and A.R.), the Fundação de Amparo à Pesquisa do Estado de São Paulo (FAPESP; 2014/26847-0, 2018/14267-2, 2018/02972-3 to E.D.-N.), the Departamento de Ciência e Tecnologia (DECIT), Ministry of Health, Brazil (PRONON, SIPAR 2500.035-167/2015-23 to E.D.-N.), the

Conselho Nacional de Desenvolvimento Científico e Tecnológico (CNPq, 314344/2020-9 to E.T.-S.), the Universidad de Costa Rica (742-B9-310 and 742-90912-19 to V.R.-M.), LABGIPAT (S.D.-B.), the Hospital Clínica Bíblica (C.C.-N.), the Greek Ministry of Culture and Education (InfeNeutra Project, NSRF 2007-2013, MIS450598, D.N.S.), the National Strategic Reference Framework Operational Program “Competitiveness, Entrepreneurship and Innovation” (NSRF 2014-2020, MIS5002486, D.N.S.), the Hellenic Helicobacter pylori Study Group (2012-2016, B.M.-G.), the Hellenic Society of Gastroenterology (National Multicenter Laboratory Surveillance Studies, 2018-2019, B. M.-G.), the Ministry of Science and Technology, Executive Yuan, Taiwan (109-2314-B-002-096; MOST 111-2314-B-002-012; MOST 109-2314-B-002-090-MY3 to J.-M.L. and M.-S. W.), the National Research Foundation of Singapore, the Singapore Ministry of Health’s National Medical Research Council (Open Fund-Large Collaborative Grant, MOH-OFLCG18May-0003), the University of Puerto Rico Comprehensive Cancer Center, the Fondo Nacional de Desarrollo Científico y Tecnológico (196-2015-FONDECYT to C.C.), Universidad Científica del Sur, and Instituto Nacional de Enfermedades Neoplásicas (INEN, Peru).

ORCID

Filipa F. Vale  <http://orcid.org/0000-0003-4635-0105>

Authors and affiliations

Pathogen Genome Bioinformatics and Computational Biology, Research Institute for Medicines, Faculty of Pharmacy, Universidade de Lisboa, Lisboa, Portugal

Filipa F. Vale

Instituto de Biosistemas e Ciências Integrativas, Faculdade de Ciências, Universidade de Lisboa, Lisboa, Portugal

Filipa F. Vale

Cancer Genomics Research Laboratory, Frederick National Laboratory for Cancer Research, Frederick, MD, USA

Difei Wang, Belynda Hicks, Bin Zhu, Meredith Yeager, Amy Hutchinson, Kedest Teshome, Kristie Jones & Wen Luo

Division of Cancer Epidemiology and Genetics, National Cancer Institute, Rockville, MD, USA

Difei Wang, Alisa M. Goldstein, Nan Hu, Philip R. Taylor, Minkyong Song, Andrés J. Gutiérrez-Escobar, Kai Yu, Bin Zhu, Christian C. Abnet, Stephen J. Chanock, M. Constanza Camargo & Charles S. Rabkin

Department of Medicine, Vanderbilt University Medical Center, Nashville, TN, USA

Judith Romero-Gallo, Uma Krishna, Richard M. Peek Jr, M. Blanca Piazuelo, Keith T. Wilson, John T. Loh & Timothy L. Cover

Veterans Affairs Tennessee Valley Healthcare System, Nashville, TN, USA

Timothy L. Cover, Keith T. Wilson

Department of Natural and Life Sciences, Faculty of Sciences, University of Algiers 1 Benyoucef Benkhedda, Algiers, Algeria

Naima Raaf

Department of Gastroenterology, Dhaka Medical College and Hospital, Dhaka, Bangladesh

Hafeza Aftab

Department of Environmental and Preventive Medicine, Oita University Faculty of Medicine, Yufu, Japan

Junko Akada, Takashi Matsumoto & Yoshio Yamaoka

Department of Pathobiology, Pharmacology and Zoological Medicine, Faculty of Veterinary Medicine, Ghent University, Ghent, Belgium

Freddy Haesebrouck

A.C.Camargo Cancer Center, São Paulo, São Paulo, Brazil

Thais F. Bartelli, Diana Noronha Nunes, Adriane Pelosof, Claudia Zitron Sztokfisz & Emmanuel Dias-Neto

Núcleo de Pesquisas em Oncologia, Universidade Federal do Pará, Belém, Pará, Brazil

Paulo Pimentel Assumpção

Medical University of Sofia, Sofia, Bulgaria

Ivan Tishkov

Faculty of Medicine and Dentistry, Department of Medicine, University of Alberta, Edmonton, AB, Canada

Karen J. Goodman, Janis Geary, Taylor J. Cromarty & Nancy L. Price

Department of Biomedical and Molecular Sciences, Queen's University, Kingston, ON, Canada

Douglas Quilty

Department of Hematology and Oncology, Faculty of Medicine, Pontificia Universidad Católica de Chile, Santiago, Chile

Alejandro H. Corvalan

Department of Pediatric Gastroenterology and Nutrition, Faculty of Medicine, Pontificia Universidad Católica de Chile, Santiago, Chile

Carolina A. Serrano

Department of Gastroenterology, Faculty of Medicine, Pontificia Universidad Católica de Chile; and Center for Cancer Prevention and Control (CECAN), Santiago, Chile

Robinson Gonzalez & Arnoldo Riquelme

Facultad de Ciencias Biológicas, Universidad de Concepción, Concepción, Chile

Apolinaria García-Cancino & Cristian Parra-Sepúlveda

Hospital Hanga Roa, Easter Island, Chile

Francisco Castillo

Grupo de Investigación en Biología del Cáncer, Instituto Nacional de Cancerología, Bogotá DC, Colombia

Maria Mercedes Bravo

Departamento de Biología, Universidad de Nariño, Pasto, Nariño, Colombia

Alvaro Pazos

Escuela de Medicina, Universidad del Valle, Cali, Valle, Colombia

Luis E. Bravo

Division of Comparative Medicine, Department of Biological Engineering, Massachusetts Institute of Technology, Cambridge, MA, USA

James G. Fox

Instituto de Investigaciones en Salud, Universidad de Costa Rica, San Jose, Costa Rica

Vanessa Ramírez-Mayorga & Silvia Molina-Castro

Laboratorio de Patología General y Gastrointestinal (LABGIPAT), San Jose, Costa Rica

Sundry Durán-Bermúdez

Servicio de Gastroenterología y Endoscopia Digestiva, Hospital Clínica Bíblica, San Jose, Costa Rica

Christian Campos-Núñez & Manuel Chaves-Cervantes

Faculty of Medicine, Osaka Metropolitan University, Osaka, Japan

Evariste Tshibangu-Kabamba

Faculty of Medicine, University of Mbuji-Mayi, Mbuji Mayi, Kasai-Oriental, Democratic Republic of the Congo

Evariste Tshibangu-Kabamba & Ghislain Disashi Tumba

Faculty of Medicine, University of Kinshasa, Kinshasa, Democratic Republic of the Congo

Antoine Tshimpi-Wola, Patrick de Jesus Ngoma-Kisoko & Dieudonné Mumba Ngoyi

Department of Parasitology, National Institute of Biomedical Research, Kinshasa, Democratic Republic of the Congo

Dieudonné Mumba Ngoyi

Instituto de Microbiología y Parasitología, IMPA, Universidad Autónoma de Santo Domingo, UASD, Santo Domingo, Dominican Republic

Modesto Cruz & Celso Hosking

Dominican-Japanese Digestive Disease Center, Dr Luis E. Aybar Health and Hygiene City, Santo Domingo, Dominican Republic

José Jiménez Abreu

Bordeaux Institute of Oncology, BRIC U1312, INSERM, Bordeaux, and National Reference Center for Campylobacters & Helicobacters, CHU de Bordeaux, Bordeaux, France

Christine Varon, Lucie Benejat, Quentin Jehanne, Philippe Lehours & Francis Megraud

Medical Research Council Unit, The Gambia at the London School of Hygiene & Tropical Medicine, Banjul, The Gambia

Ousman Secka

Department of Gastroenterology, Hepatology and Infectious Diseases, Otto-von-Guericke University Magdeburg, Magdeburg, Germany

Alexander Link & Peter Malfertheiner

Department of Biochemistry, School of Biological Sciences, University of Cape Coast, Cape Coast, Central Region, Ghana

Michael Buenor Adinortey

Department of Internal Medicine and Therapeutics, School of Medical Sciences, University of Cape Coast, Cape Coast, Central Region, Ghana

Ansumana Sandy Bockarie

Department of Molecular Biology and Biotechnology, School of Biological Sciences, University of Cape Coast, Cape Coast, Central Region, Ghana

Cynthia Ayefoumi Adinortey

Department of Biology Education, Faculty of Science Education, University of Education, Winneba, Ghana

Eric Gyamerah Ofori

Laboratory of Medical Microbiology, Hellenic Pasteur Institute, Athens, Greece

Dionyssios N. Sgouras & Beatriz Martinez-Gonzalez

Department of Gastroenterology, Alexandra Hospital, Athens, Greece

Spyridon Michopoulos

Department of Gastroenterology, Athens Medical, P. Faliron Hospital, Athens, Greece

Sotirios Georgopoulos

Facultad de Ciencias Médicas, University of San Carlos of Guatemala, Guatemala City, Guatemala

Elisa Hernandez

Departamento de Medicina Interna, Hospital de Occidente, Santa Rosa de Copán, Honduras

Ricardo L. Dominguez

School of Medicine, University of Alabama at Birmingham (UAB), Birmingham, AL, USA

Douglas R. Morgan

Landspítali – The National University Hospital of Iceland, Reykjavík, Iceland

Hjördís Harðardóttir, Anna Ingibjörg Gunnarsdóttir, Hallgrímur Guðjónsson, Jón Gunnlaugur Jónsson & Einar S. Björnsson

University of Iceland, Reykjavík, Iceland

Jón Gunnlaugur Jónsson & Einar S. Björnsson

Department of Microbiology, Kasturba Medical College, Manipal Academy of Higher Education, Manipal, Karnataka, India

Mamatha Ballal & Vignesh Shetty

Department of Medicine, University of Cambridge, Cambridge, UK

Vignesh Shetty

Universitas Airlangga, Surabaya, East Java, Indonesia

Muhammad Miftahussurur, Titong Sugihartono, Ricky Indra Alfaray, Langgeng Agung Waskito & Kartika Afrida Fauzia

University of Indonesia, Jakarta, Indonesia

Ari Fahrial Syam & Hasan Maulahela

Digestive Disease Research Institute, Tehran University of Medical Sciences, Tehran, Iran

Reza Malekzadeh & Masoud Sotoudeh

Clinical Microbiology Laboratory and Research Institute, Tzafon Medical Center, affiliated with Azrieli Faculty of Medicine, Bar Ilan University, Poriya, Israel

Avi Peretz & Maya Azrad

Azrieli Faculty of Medicine, Bar Ilan University, Safed, Israel

Avi Peretz & Avi On

Pediatric Gastroenterology and Nutrition Unit, Tzafon Medical Center, Poriya, Israel

Avi On

Unit of Immunopathology and Oncological Biomarkers, Centro di Riferimento Oncologico di Aviano, Aviano, Italy

Valli De Re & Stefania Zanussi

Unit of Oncological Gastroenterology, Centro di Riferimento Oncologico di Aviano (CRO) IRCCS, Italy; Department of Medical, Surgical and Health Sciences, University of Trieste, Italy

Renato Cannizzaro

Unit of Pathology, Centro di Riferimento Oncologico di Aviano (CRO) IRCCS, Italy;

Department of Medical, Surgical and Health Sciences, University of Trieste, Italy

Vincenzo Canzonieri

Department of Gastroenterology and Metabolism, Nagoya City University Graduate School of Medical Sciences, Nagoya, Japan

Takaya Shimura

School of Medicine, Kyorin University, Mitaka, Tokyo, Japan

Kengo Tokunaga, Takako Osaki & Shigeru Kamiya

Faculty of Medicine, Jordan University of Science and Technology, Ar-Ramtha, Jordan

Khaled Jadallah & Ismail Matalaka

Research Institute of Life and Health Sciences, Higher School of Medicine, Kokshetau University named after Sh. Ualikhanov, Kokshetau, Kazakhstan

Igissin Nurbek Sagynbekuly

Central Asian Institute for Medical Research, Astana, Kazakhstan

Igissin Nurbek Sagynbekuly

Asian Pacific Organization for Cancer Prevention, Bishkek, Kyrgyzstan

Igissin Nurbek Sagynbekuly

Kyrgyz State Medical Academy, Bishkek, Kyrgyzstan

Mariia Satarovna Moldobaeva & Attokurova Rakhat

Center for Gastric Cancer, National Cancer Center, Goyang, South Korea

Il Ju Choi

Department of Internal Medicine, Chung-Ang University Hospital, Seoul, South Korea

Jae Gyu Kim

College of Medicine, Seoul National University, Seoul, South Korea

Nayoung Kim

Institute of Clinical and Preventive Medicine, University of Latvia, Riga, Latvia

Mārcis Leja, Reinis Vangravs, Ģirts Šķenders, Aiga Rūdule & Ilze Kikuste

Digestive Diseases Centre GASTRO, Riga, Latvia

Mārcis Leja & Aigars Vanags

Riga East University Hospital, Riga, Latvia

Mārcis Leja, Ģirts Šķenders & Dace Rudzīte

Department of Gastroenterology, Institute for Digestive Research, Medical Academy, Lithuanian University of Health Sciences, Kaunas, Lithuania

Juozas Kupcinskas, Jurgita Skieceviciene, Laimas Jonaitis, Gediminas Kiudelis, Paulius Jonaitis, Vytautas Kiudelis & Greta Varkalaite

Department of Medical Microbiology, Faculty of Medicine, Universiti Malaya, Kuala Lumpur, Malaysia

Jamuna Vadivelu, Mun Fai Loke & Kumutha Malar Vellasamy

Medical Education Research and Development Unit, Faculty of Medicine, Universiti Malaya, Kuala Lumpur, Malaysia

Jamuna Vadivelu

Departamento de Patología, Instituto Nacional de Cancerología, Mexico City, Mexico

Roberto Herrera-Goepfert

Servicio de Endoscopia, Instituto Nacional de Cancerología, Mexico City, Mexico

Juan Octavio Alonso-Larraga

Defence Services General Hospital, Yangon, Yangon, Yangon Region, Myanmar

Than Than Yee & Kyaw Htet

Nippon Medical School, Tokyo, Japan

Takeshi Matsuhisa

Department of Gastroenterology, Maharajgunj Medical Campus, Tribhuvan University Teaching Hospital, Kathmandu, Nepal

Pradeep Krishna Shrestha

Division of Health Sciences, Abu Dhabi Women's Campus, Higher Colleges of Technology, Abu Dhabi, United Arab Emirates

Shamshul Ansari

Department of Community Medicine, Babcock University, Ilishan, Ogun State, Nigeria

Olumide Abiodun

Department of Medicine, Babcock University, Ilishan, Ogun State, Nigeria

Christopher Jemilohun

Department of Medicine, College of Medicine, University of Ibadan, Ibadan, Oyo, Nigeria

Kolawole Oluseyi Akande

Department of Nursing, Crescent University, Abeokuta, Ogun State, Nigeria

Oluwatosin Olu-Abiodun

University Teaching Hospital, University of Jos, Jos, Plateau, Nigeria

Francis Ajang Magaji

University of Calabar Teaching Hospital, Calabar, Cross River, Nigeria

Ayodele Omotoso & Uchenna Okonkwo

Department of Surgery, University of Nigeria Teaching Hospital, Ituku-Ozalla, Enugu State, Nigeria

Chukwuemeka Chukwunwendu Osuagwu

Department of Internal Medicine, Federal Medical Center Abeokuta, Abeokuta, Ogun State, Nigeria

Opeyemi O. Owoseni

Faculty of Health Sciences, Universidad Científica del Sur, Lima, Peru

Carlos Castaneda

Departamento de investigación, Instituto Nacional de Enfermedades Neoplásicas, Lima, Peru

Miluska Castillo

Universidad Peruana Cayetano Heredia, Lima, Peru

Billie Velapatino

Bloomberg School of Public Health, Johns Hopkins University, Baltimore, MD, USA

Robert H. Gilman

Department of Microbiology, Wroclaw Medical University, Wroclaw, Poland

Paweł Krzyżek & Grażyna Gościński

Department of Surgery Teaching, Wroclaw Medical University, Wroclaw, Poland

Dorota Pawelka

Department of Pharmaceutical Microbiology, Medical University of Lublin, Lublin, Poland

Izabela Korona-Główniak

Department of Gastroenterology with Endoscopic Unit, Medical University of Lublin, Lublin, Poland

Halina Cichoz-Lach

Instituto Nacional de Saúde Dr. Ricardo Jorge, Lisboa, Portugal

Monica Oleastro

Instituto de Patologia e Imunologia Molecular da Universidade do Porto, Porto, Portugal

Ceu Figueiredo, Jose C. Machado & Rui M. Ferreira

Instituto de Investigação e Inovação em Saúde, Universidade do Porto, Porto, Portugal

Ceu Figueiredo, Jose C. Machado & Rui M. Ferreira

Faculdade de Medicina da Universidade do Porto, Porto, Portugal

Ceu Figueiredo & Jose C. Machado

Department of Pancreatic, Biliary and Upper Digestive Tract Disorders, A. S. Loginov Moscow Clinical Scientific Center, Moscow, Russia

Dmitry S. Bordin

Department of General Medical Practice and Family Medicine, Tver State Medical University, Moscow, Russia

Dmitry S. Bordin

Department of Propaedeutic of Internal diseases and Gastroenterology, Russian University of Medicine, Moscow, Russia

Dmitry S. Bordin

Department of Faculty Therapy and Gastroenterology, Omsk State Medical University, Omsk, Russia

Maria A. Livzan

Scientific Research Institute of Medical Problems of the North, Federal Research Centre “Krasnoyarsk Science Centre” of the Siberian Branch of Russian Academy of Science, Krasnoyarsk, Russia

Vladislav V. Tsukanov

Cancer Science Institute of Singapore, National University of Singapore, Singapore, Singapore

Patrick Tan

Cancer and Stem Cell Biology Program, Duke NUS Medical School, Singapore, Singapore

Patrick Tan

Genome Institute of Singapore, Agency for Science, Technology and Research, Singapore, Singapore

Patrick Tan

Department of Medicine, Yong Loo Lin School of Medicine, National University of Singapore, Singapore, Singapore

Khay Guan Yeoh & Feng Zhu

Department of Gastroenterology and Hepatology, National University Health System, Singapore, Singapore

Khay Guan Yeoh

Chris Hani Baragwanath Academic Hospital, Johannesburg, South Africa

Reid Ally

University of the Witwatersrand, Johannesburg, South Africa

Reid Ally

Max von Pettenkofer Institute of Hygiene and Medical Microbiology, Faculty of Medicine, LMU Munich, Munich, Germany

Rainer Haas & Wolfgang Fischer

Department of Microbiology, Hospital Universitario Donostia-Instituto de Investigacion Sanitaria Biogipuzkoa, San Sebastian, Spain

Milagrosa Montes, María Fernández-Reyes, Esther Tamayo & Jacobo Lizasoain

Department of Gastroenterology, BioDonostia Health Research Institute – Donostia University Hospital, Universidad del País Vasco (UPV/EHU), Centro de Investigación Biomédica en Red de Enfermedades Hepáticas y Digestivas (CIBERehd), San Sebastian, Spain

Luis Bujanda

Digestive Diseases Unit, Parc Taulí Hospital Universitari. Institut d'Investigació i Innovació Parc Taulí (I3PT-CERCA), Universitat Autònoma de Barcelona, Barcelona, Spain

Sergio Lario, María José Ramírez-Lázaro, Xavier Calvet & Eduard Brunet-Mas

Centro de Investigación Biomédica en Red de Enfermedades Hepáticas y Digestivas, Instituto de Salud Carlos III, Madrid, Spain

Sergio Lario, María José Ramírez-Lázaro, Xavier Calvet & Eduard Brunet-Mas

Lozano Blesa University Clinic Hospital, Zaragoza, Spain

María José Domper-Arnal & Sandra García-Mateo

Aragon Health Research Institute, Zaragoza, Spain

María José Domper-Arnal & Sandra García-Mateo

Miguel Servet University Hospital, Zaragoza, Spain

Daniel Abad-Baroja

Hospital General de Granollers, Barcelona, Spain

Pedro Delgado-Guillena

Gastroenterology Department, Hospital Clínic of Barcelona, Centro de Investigación Biomédica en Red de Enfermedades Hepáticas y Digestivas, Facultat de Medicina i Ciències de la Salut, Universitat de Barcelona, Barcelona, Spain

Leticia Moreira

Hospital Universitari de Bellvitge, L'Hospitalet de Llobregat, Barcelona, Spain

Josep Botargues

Department of Gastroenterology, Hospital Universitario Central de Asturias, Oviedo, Asturias, Spain

Isabel Pérez-Martínez & Eva Barreiro-Alonso

Diet, Microbiota and Health Group, Instituto de Investigación Sanitaria del Principado de Asturias, Oviedo, Asturias, Spain

Isabel Pérez-Martínez

Farmacology Group, Instituto de Investigación Sanitaria del Principado de Asturias, Oviedo, Asturias, Spain

Eva Barreiro-Alonso

Instituto Universitario de Oncología del Principado de Asturias, Oviedo, Asturias, Spain

Eva Barreiro-Alonso

Hospital General Universitario Gregorio Marañón, Madrid, Spain

Virginia Flores

Gastroenterology Unit, Hospital Universitario de La Princesa, Instituto de Investigación Sanitaria Princesa, Madrid, Spain

Javier P. Gisbert

Universidad Autónoma de Madrid, Centro de Investigación Biomédica en Red de Enfermedades Hepáticas y Digestivas, Madrid, Spain

Javier P. Gisbert

Gastroenterology Department, Hospital Universitario de Navarra, Pamplona, Navarra, Spain

Eduarne Amorena Muro

Hospital de Leon, Leon, Spain

Pedro Linares & Laura Alcoba

Institut of Biomedicine, University of León, Consortium for Biomedical Research in Epidemiology and Public Health, Leon, Spain

Vicente Martin

Instituto de Investigación Sanitaria INCLIVA, Hospital Clínico Universitario de Valencia, Valencia, Spain

Tania Fleitas-Kanonnikoff

Biochemistry Department, Faculty of Science, King Abdulaziz University, Jeddah, Saudi Arabia

Hisham N. Altayeb

Faculty of Medical laboratory Science, Sudan University of Science and Technology, Khartoum, Sudan

Hisham N. Altayeb

Centre for Translational Microbiome Research, Department of Microbiology, Tumor and Cell Biology, Karolinska Institutet, Solna, Sweden

Lars Engstrand

University of Skövde, Skövde, Sweden

Helena Enroth

Institute for Infectious Diseases, University of Bern, Bern, Switzerland

Peter M. Keller

Clinical Bacteriology/Mycology Unit, University Hospital Basel, Basel, Switzerland

Peter M. Keller

Institute of Medical Microbiology, University of Zurich, Zürich, Switzerland

Karoline Wagner

Clinic for Gastroenterology and Hepatology, University Hospital Zurich, Zürich, Switzerland

Daniel Pohl

College of Medicine, National Taiwan University, Taipei City, Taiwan

Yi-Chia Lee, Jyh-Ming Liou & Ming-Shiang Wu

Medical Microbiology Department, Cerrahpasa Medical Faculty, Istanbul University-Cerrahpasa, İstanbul, Türkiye

Bekir Kocazeybek & Suat Sarıbas

General Surgery Department, Cerrahpasa Medical Faculty, Istanbul University-Cerrahpasa, İstanbul, Türkiye

İhsan Taşçı & Süleyman Demiryas

Medical Pathology Department, Cerrahpasa Medical Faculty, Istanbul University-Cerrahpasa, İstanbul, Türkiye

Nuray Kepil

Staten Island University Hospital -Northwell Health, Staten Island, NY, USA

Luis Quiel

Carson Tahoe Regional Medical Center, Carson City, NV, USA

Miguel Villagra

White River Medical Center, Batesville, AR, USA

Morgan Norton & Deborah Johnson

Department of Medicine, Stanford University, Stanford, CA, USA

Robert J. Huang & Joo Ha Hwang

Albert Einstein College of Medicine, Bronx, NY, USA

Wendy Szymczak, Saranathan Rajagopalan, Emmanuel Asare, William R. Jacobs Jr. & Haejin In

Rutgers Cancer Institute, New Brunswick, NJ, USA

Haejin In

Georgia Cancer Center's Biorepository, Augusta University, Augusta, Georgia

Roni Bollag & Aileen Lopez

Augusta University Medical Center, Augusta, Georgia

Edward J. Kruse & Joseph White

Section of Gastroenterology and Hepatology, Department of Medicine, Baylor College of Medicine, Houston, TX, USA

David Y. Graham & Yoshio Yamaoka

Enteric Diseases Laboratory Branch, Division of Foodborne, Waterborne, and Environmental Diseases, Centers for Disease Control and Prevention, Atlanta, GA, USA

Charlotte Lane & Yang Gao

Gi Care for Kids, LLC, Children's Center for Digestive Healthcare, LLC, Atlanta, GA, USA

Benjamin D. Gold

University of Puerto Rico Comprehensive Cancer Center, San Juan, Puerto Rico

Marcia Cruz-Correa & María González-Pons

University of Puerto Rico Medical Sciences Campus, San Juan, Puerto Rico

Marcia Cruz-Correa

Gastrointestinal and Other Cancers Research Group, Division of Cancer Prevention, National Cancer Institute, Rockville, MD, USA

Luz M. Rodriguez

Department of Endoscopy, Cho Ray Hospital, Ho Chi Minh City, Vietnam

Vo Phuoc Tuan, Ho Dang Quy Dung & Tran Thanh Binh

Department of Hepatogastroenterology, 108 Military Central Hospital, Hanoi, Vietnam

Tran Thi Huyen Trang & Vu Van Khien

Sequencing Facility Bioinformatics Group, Bioinformatics and Computational Science Directorate, Frederick National Laboratory for Cancer Research, Frederick, MD, USA

Xiongfong Chen & Yongmei Zhao

Cancer Research Technology Program, Frederick National Laboratory for Cancer Research, Frederick, MD, USA

Castle Raley, Bailey Kessing & Bao Tran

Center for the Evolutionary Origins of Human Behavior, Kyoto University, Inuyama, Japan

Yukako Katsura

Instituto de Ciencias Biomédicas (ICBM), Facultad de Medicina, Universidad de Chile, Santiago, Chile

Patricio Gonzalez-Hormazabal

School of Life Sciences, University of Warwick, Coventry, UK

Xavier Didelot

Department of Biology & Biochemistry, University of Bath, Bath, UK

Sam Sheppard

Departamento de Genética, Ecología e Evolução, Universidade Federal de Minas Gerais, Belo Horizonte, Brazil

Eduardo Tarazona-Santos & Roxana Zamudio

National Institute on Minority Health and Health Disparities, Bethesda, MD, USA

Leonardo Mariño-Ramírez

Division of Microbiology, Department of Biology, Friedrich-Alexander-Universität Erlangen-Nürnberg, Erlangen, Germany

Steffen Backert

Institute of Experimental Internal Medicine, Otto-von-Guericke-Universität Magdeburg, Magdeburg, Germany

Michael Naumann

Laboratory of Experimental Medicine and Pediatrics, Faculty of Medicine and Health Sciences, University of Antwerp, Antwerp, Belgium

Annemieke Smet

Department of Molecular Microbiology, Washington University School of Medicine, St. Louis, MO, USA

Douglas E. Berg

Genomics and Health Area, FISABIO - Public Health, Valencia, Spain

Álvaro Chiner-Oms

CIBER in Epidemiology and Public Health, Madrid, Spain

Álvaro Chiner-Oms & Iñaki Comas

Tuberculosis Genomics Unit, Instituto de Biomedicina de Valencia, Consejo Superior de Investigaciones Científicas, Valencia, Spain

Iñaki Comas & Francisco José Martínez-Martínez

Quadram Institute Bioscience, Norwich, UK

Roxana Zamudio

National Institute of Infectious Diseases, Tokyo, Japan

Koji Yahara

Center for Advanced Biotechnology and Medicine, Rutgers University, New Brunswick, NJ, USA

Martin J. Blaser

New England Biolabs, Ipswich, MA, USA

Tamas Vincze, Richard D. Morgan & Richard J. Roberts

Bacterial Pathogenesis and Antimicrobial Resistance Unit, National Institute of Allergy and Infectious Diseases, Bethesda, MD, USA

John P. Dekker

Unidad de Investigación en Enfermedades Infecciosas y Parasitarias, UMAE Pediatría, Instituto de Seguro Social, Mexico City, Mexico

Javier Torres

Department of Genetics, SOKENDAI University, Mishima, Shizuoka, Japan

Mehwish Noureen

National Center for Biotechnology Information, National Library of Medicine, National Institutes of Health, Bethesda, MD, USA

Joshua L. Cherry

Division of International Epidemiology and Population Studies, Fogarty International Center, National Institutes of Health, Bethesda, MD, USA

Joshua L. Cherry

Faculty of Information Science and Technology, Hokkaido University, Sapporo, Japan

Naoki Osada

Department of Molecular Oncology, Chiba University, Chiba, Japan

Masaki Fukuyo

Bioinformation and DDBJ Center, National Institute of Genetics, Mishima, Shizuoka, Japan

Masanori Arita

Instituto Nacional de Medicina Genómica, Ciudad de México, México

Santiago Sandoval-Motta

Consejo Nacional de Ciencia y Tecnología, Cátedras CONACYT, Ciudad de México, México

Santiago Sandoval-Motta

Centro de Ciencias de la Complejidad, Universidad Nacional Autónoma de México, Ciudad de México, México

Santiago Sandoval-Motta

Department of Life Sciences and Biotechnology, University of Ferrara, Ferrara, Italy

Rajiv Boscolo Agostini & Silvia Ghirotto

Facultad de Ciencias Químicas, Universidad Autónoma de Chihuahua, Chihuahua, Chihuahua, México

Zilia Y. Muñoz-Ramírez

Centre for Microbes Development and Health, Institute Pasteur Shanghai, Shanghai, China

Roberto C. Torres & Daniel Falush

Department of Chemistry and Molecular Biology, University of Gothenburg, Gothenburg, Sweden

Kaisa Thorell

National Institute for Basic Biology, National Institutes of Natural Sciences, Aichi, Japan

Ikuo Uchiyama

Research Center for Micro-Nano Technology, Hosei University, Tokyo, Japan

Ichizo Kobayashi

Data availability statement

All HpGP genomes are publicly available in the NCBI GenBank repository, BioProject accession PRJNA529500.

References

- Mégraud F, Lehours P, Vale FF. The history of *Helicobacter pylori*: from phylogeography to paleomicrobiology. *Clin Microbiol Infect.* 2016;22(11):922–927. doi:10.1016/j.cmi.2016.07.013.
- Malfertheiner P, Camargo MC, El-Omar E, Liou J-M, Peek R, Schulz C, Smith SI, Suerbaum S. *Helicobacter pylori* infection. *Nat Rev Dis Prim [Internet].* 2023;9(1):19. doi:10.1038/s41572-023-00431-8.
- Ailloud F, Estibariz I, Suerbaum S. Evolved to vary: genome and epigenome variation in the human pathogen *Helicobacter pylori*. *FEMS Microbiol Rev.* 2021;45(1). doi:10.1093/femsre/fuaa042.
- Falush D, Wirth T, Linz B, Pritchard JK, Stephens M, Kidd M, Blaser MJ, Graham DY, Vacher S, Perez-Perez GI, et al. Traces of human migrations in *Helicobacter pylori* populations. *Science.* 2003;299(5612):1582–1585. doi:10.1126/science.1080857.
- Linz B, Balloux F, Moodley Y, Manica A, Liu H, Roumagnac P, Falush D, Stamer C, Prugnolle F, van der Merwe SW, et al. An African origin for the intimate association between humans and *Helicobacter pylori*. *Nature.* 2007;445(7130):915–918. doi:10.1038/nature05562.
- Vale FF, Vadivelu J, Oleastro M, Breurec S, Engstrand L, Perets TT, Mégraud F, Lehours P. Dormant phages of *Helicobacter pylori* reveal distinct populations in Europe. *Sci Rep.* 2015;5(1). doi:10.1038/srep14333.
- Vale FF, Nunes A, Oleastro M, Gomes JP, Sampaio DA, Rocha R, Vítor JMB, Engstrand L, Pascoe B, Berthenet E, et al. Genomic structure and insertion sites of *Helicobacter pylori* prophages from various geographical origins. *Sci Rep.* 2017;7(1):42471. doi:10.1038/srep42471.
- Yahara K, Lehours P, Vale FF. Analysis of genetic recombination and the pan-genome of a highly recombinogenic bacteriophage species. *Microb Genomics.* 2019;5(8). doi:10.1099/mgen.0.000282.
- Feiner R, Argov T, Rabinovich L, Sigal N, Borovok I, Herskovits A. A new perspective on lysogeny: prophages as active regulatory switches of bacteria. *Nat Rev Microbiol.* 2015;13(10):641–650. doi:10.1038/nrmi-cro3527.
- Nepal R, Houtak G, Wormald P-J, Psaltis AJ, Vreugde S. Prophage: a crucial catalyst in infectious disease modulation. *Lancet Microbe.* 2022;3(3):e162–3. doi:10.1016/S2666-5247(21)00354-2.
- Lehours P, Vale FF, Bjursell MK, Melefors O, Advani R, Glavas S, Guegueniat J, Gontier E, Lacomme S, Matos AA, et al. Genome sequencing reveals a phage

- in *Helicobacter pylori*. *MBio*. 2011;2(6):2. doi:10.1128/mBio.00239-11.
12. Muñoz AB, Trespalacios-Rangel AA, Vale FF, Mannion A, Dzink-Fox J, Shen Z, Piazuolo MB, Wilson KT, Correa P, Peek RMJ, et al. An American lineage of *Helicobacter pylori* prophages found in Colombia. *Helicobacter*. 2021;59(2):e12779. doi:10.1111/hel.12779.
 13. Van den Bossche A, Ceysens P-J, De Smet J, Hendrix H, Bellon H, Leimer N, Wagemans J, Delattre A-S, Cenens W, Aertsen A, et al. Systematic identification of hypothetical bacteriophage proteins targeting key protein complexes of *Pseudomonas aeruginosa*. *J Proteome Res*. 2014;13(10):4446–4456. doi:10.1021/pr500796n.
 14. Hampton HG, Watson BNJ, Fineran PC. The arms race between bacteria and their phage foes. *Nature*. 2020;577(7790):327–336. doi:10.1038/s41586-019-1894-8.
 15. Bobay LM, Touchon M, Rocha EP. Pervasive domestication of defective prophages by bacteria. *Proc Natl Acad Sci USA*. 2014;111(33):12127–12132. doi:10.1073/pnas.1405336111.
 16. Brüssow H, Canchaya C, Hardt W-D. Phages and the evolution of bacterial pathogens: from genomic rearrangements to lysogenic conversion. *Microbiol Mol Biol Rev*. 2004;68(3):560–602. table of contents. 10.1128/MMBR.68.3.560-602.2004.
 17. Canchaya C, Proux C, Fournous G, Bruttin A, Brüssow H. Prophage genomics. *Microbiol Mol Biol Rev*. 2003;67(2):238–276. table of contents. 10.1128/MMBR.67.2.238-276.2003.
 18. Wang X, Kim Y, Ma Q, Hong SH, Pokusaeva K, Sturino JM, Wood TK. Cryptic prophages help bacteria cope with adverse environments. *Nat Commun*. 2010;1(1):147. doi:10.1038/ncomms1146.
 19. Akhter S, Aziz RK, Edwards RA. PhiSpy: a novel algorithm for finding prophages in bacterial genomes that combines similarity- and composition-based strategies. *Nucleic Acids Res*. 2012;40(16):e126. doi:10.1093/nar/gks406.
 20. Howard-Varona C, Hargreaves KR, Abedon ST, Sullivan MB. Lysogeny in nature: mechanisms, impact and ecology of temperate phages. *ISME J [Internet]*. 2017;11(7):1511–1520. doi:10.1038/ismej.2017.16.
 21. Oliveira PH, Touchon M, Rocha EPC. The interplay of restriction-modification systems with mobile genetic elements and their prokaryotic hosts. *Nucleic Acids Res*. 2014;42(16):10618–10631. doi:10.1093/nar/gku734.
 22. Vale FF, Mégraud F, Vitor JM. Geographic distribution of methyltransferases of *Helicobacter pylori*: evidence of human host population isolation and migration. *BMC Microbiol*. 2009;9(1). doi:10.1186/1471-2180-9-193.
 23. Hacker J, Kaper JB. Pathogenicity islands and the evolution of microbes. *Annu Rev Microbiol*. 2000;54(1):641–679. doi:10.1146/annurev.micro.54.1.641.
 24. Uchiyama J, Takeuchi H, Kato S, Takemura-Uchiyama I, Ujihara T, Daibata M, Matsuzaki S. Complete genome sequences of two *Helicobacter pylori* bacteriophages isolated from Japanese patients. *J Virol*. 2012;86(20):11400–11401. doi:10.1128/JVI.01767-12.
 25. Vale FF, Nunes A, Oleastro M, Gomes JP, Sampaio DA, Rocha R, Vitor JMB, Engstrand L, Pascoe B, Berthenet E, et al. Genomic structure and insertion sites of *Helicobacter pylori* prophages from various geographical origins. *Sci Rep*. 2017;7(1). doi:10.1038/srep42471.
 26. Vale FF, Lehours P. Relating phage genomes to *Helicobacter pylori* population structure: General steps using whole-genome sequencing data. *Int J Mol Sci*. 2018;19(7):1831. doi:10.3390/ijms19071831.
 27. Naito T, Kusano K, Kobayashi I. Selfish behavior of restriction-modification systems. *Science*. 1995;267(5199):897–899. doi:10.1126/science.7846533.
 28. Roberts RJ, Vincze T, Posfai J, Macelis D. REBASE: a database for DNA restriction and modification: enzymes, genes and genomes. *Nucleic Acids Res*. 2023;51(D1):D629–30. doi:10.1093/nar/gkac975.
 29. Furuta Y, Namba-Fukuyo H, Shibata TF, Nishiyama T, Shigenobu S, Suzuki Y, Sugano S, Hasebe M, Kobayashi I, Rao DN. Methylome diversification through changes in DNA methyltransferase sequence specificity. *PLOS Genet*. 2014;10(4):e1004272. doi:10.1371/journal.pgen.1004272.
 30. Yano H, Alam MZ, Rimbara E, Shibata TF, Fukuyo M, Furuta Y, Nishiyama T, Shigenobu S, Hasebe M, Toyoda A, et al. Networking and specificity-changing DNA methyltransferases in *Helicobacter pylori*. *Front Microbiol*. 2020;11:1628. doi:10.3389/fmicb.2020.01628.
 31. Carey JN, Mettert EL, Fishman-Engel DR, Roggiani M, Kiley PJ, Goulian M. Phage integration alters the respiratory strategy of its host. *Elife [Internet]*. 2019;8:e49081. doi:10.7554/eLife.49081.
 32. Hatfull GF. Bacteriophage genomics. *Curr Opin Microbiol*. 2008;11(5):447–453. doi:10.1016/j.mib.2008.09.004.
 33. Touchon M, Bernheim A, Rocha EP. Genetic and life-history traits associated with the distribution of prophages in bacteria. *ISME J*. 2016;10(11):2744–2754. doi:10.1038/ismej.2016.47.
 34. Censini S, Lange C, Xiang Z, Crabtree JE, Ghiara P, Borodovsky M, Rappuoli R, Covacci A. *cag*, a pathogenicity island of *Helicobacter pylori*, encodes type I-specific and disease-associated virulence factors. *Proc Natl Acad Sci USA*. 1996;93(25):14648–14653. doi:10.1073/pnas.93.25.14648.
 35. Silva B, Nunes A, Vale FF, Rocha R, Gomes JP, Dias R, Oleastro M. The expression of *Helicobacter pylori* *tfs* plasticity zone cluster is regulated by pH and adherence, and its composition is associated with differential gastric IL-8 secretion. *Helicobacter*. 2017;22(4). doi:10.1111/hel.12390.
 36. Syberg-Olsen MJ, Garber AI, Keeling PJ, McCutcheon JP, Husnik F, Falush D. Pseudofinder: detection of pseudogenes in prokaryotic genomes.

- Mol Biol Evol. 2022;39(7):39. doi:10.1093/molbev/msac153.
37. Fuxelius H-H, Darby AC, Cho N-H, Andersson SGE. Visualization of pseudogenes in intracellular bacteria reveals the different tracks to gene destruction. *Genome Biol.* 2008;9(2):R42. doi:10.1186/gb-2008-9-2-r42.
 38. Goodhead I, Darby AC. Taking the pseudo out of pseudogenes. *Curr Opin Microbiol.* 2015;23:102–109. doi:10.1016/j.mib.2014.11.012.
 39. Deochand DK, Grove A. MarR family transcription factors: dynamic variations on a common scaffold. *Crit Rev Biochem Mol Biol.* 2017;52(6):595–613. doi:10.1080/10409238.2017.1344612.
 40. Boeckman J, Korn A, Yao G, Ravindran A, Gonzalez C, Gill J. Sheep in wolves' clothing: temperate T7-like bacteriophages and the origins of the autographiviridae. *Virology.* 2022;568:86–100. doi:10.1016/j.virol.2022.01.013.
 41. Ribeiro HG, Nilsson A, Melo LDR, Oliveira A. Analysis of intact prophages in genomes of *Paenibacillus larvae*: an important pathogen for bees. *Front Microbiol.* 2022;13:903861. doi:10.3389/fmicb.2022.903861.
 42. Hargreaves KR, Kropinski AM, Clokie MR. Bacteriophage behavioral ecology: how phages alter their bacterial host's habits. *Bacteriophage.* 2014;4(3):e29866. doi:10.4161/bact.29866.
 43. Silpe JE, Duddy OP, Bassler BL. Natural and synthetic inhibitors of a phage-encoded quorum-sensing receptor affect phage–host dynamics in mixed bacterial communities. *Proc Natl Acad Sci USA.* 2022;119(49):e2217813119. doi:10.1073/pnas.2217813119.
 44. Tan D, Hansen MF, de Carvalho LN, Røder HL, Burmølle M, Middelboe M, Svenningsen SL. High cell densities favor lysogeny: induction of an H20 prophage is repressed by quorum sensing and enhances biofilm formation in *Vibrio anguillarum*. *Isme J.* 2020;14(7):1731–1742. doi:10.1038/s41396-020-0641-3.
 45. Gupta N, Behera DK, Prajapati VK, Verma VK. A comprehensive approach to discover toxin-antitoxin systems from human pathogen *Helicobacter pylori*: a poison and its antidote encapsulated in the genome. *Life Sci.* 2022;288:120149. doi:10.1016/j.lfs.2021.120149.
 46. El Mortaji L, Tejada-Arranz A, Rifflet A, Boneca IG, Pehau-Arnaudet G, Radicella JP, Marsin S, De Reuse H. A peptide of a type I toxin–antitoxin system induces *Helicobacter pylori* morphological transformation from spiral shape to coccoids. *Proc Natl Acad Sci USA.* 2020;117(49):31398–31409. doi:10.1073/pnas.2016195117.
 47. Page R, Peti W. Toxin-antitoxin systems in bacterial growth arrest and persistence. *Nat Chem Biol.* 2016;12(4):208–214. doi:10.1038/nchembio.2044.
 48. Mruk I, Kobayashi I. To be or not to be: regulation of restriction–modification systems and other toxin–antitoxin systems. *Nucleic Acids Res.* 2014;42(1):70–86. doi:10.1093/nar/gkt711.
 49. Hazan R, Sat B, Reches M, Engelberg-Kulka H. Postsegregational killing mediated by the P1 phage “addiction module” phd-doc requires the *Escherichia coli* programmed cell death system mazEF. *J Bacteriol.* 2001;183(6):2046–2050. doi:10.1128/JB.183.6.2046-2050.2001.
 50. Coray DS, Kurenbach B, Heinemann JA. Exploring the parameters of post-segregational killing using heterologous expression of secreted toxin barnase and anti-toxin barstar in an *Escherichia coli* case study. *Microbiology.* 2017;163(2):122–130. doi:10.1099/mic.0.000395.
 51. Thorell K, Muñoz-Ramírez ZY, Wang D, Sandoval-Motta SB, Agostini R, Ghirotto S, Torres RC, Romero-Gallo J, Krishna U, Peek RM, et al. New insights into *Helicobacter pylori* population structure from analysis of a large worldwide collection of complete genomes: the *H. pylori* genome project. *Nat Commun.* 2023;14(1):8184. doi:10.1038/s41467-023-43562-y.
 52. Boratyn GM, Camacho C, Cooper PS, Coulouris G, Fong A, Ma N, Madden TL, Matten WT, McGinnis SD, Merezuk Y, et al. BLAST: a more efficient report with usability improvements. *Nucleic Acids Res.* 2013;41(W1):W29–W33. doi:10.1093/nar/gkt282.
 53. Katoh K, Standley DM. MAFFT multiple sequence alignment software version 7: improvements in performance and usability. *Mol Biol Evol.* 2013;30(4):772–780. doi:10.1093/molbev/mst010.
 54. Price MN, Dehal PS, Arkin AP, Poon AFY. FastTree 2 – approximately maximum-likelihood trees for large alignments. *PLoS One.* 2010;5(3):e9490. doi:10.1371/journal.pone.0009490.
 55. Letunic I, Bork P. Interactive tree of life (iTOL) v5: an online tool for phylogenetic tree display and annotation. *Nucleic Acids Res.* 2021;49(W1):W293–W296. doi:10.1093/nar/gkab301.
 56. Huson DH, Bryant D. Application of phylogenetic networks in evolutionary studies. *Mol Biol Evol.* 2006;23(2):254–267. doi:10.1093/molbev/msj030.
 57. Lawson DJ, Hellenthal G, Myers S, Falush D, Copenhaver GP. Inference of population structure using dense haplotype data. *PLOS Genet.* 2012;8(1):e1002453. doi:10.1371/journal.pgen.1002453.
 58. Page AJ, Taylor B, Delaney AJ, Soares J, Seemann T, Keane JA, Harris SR. SNP-sites: rapid efficient extraction of SNPs from multi-FASTA alignments. *Microb Genomics.* 2016;2(4):e000056. doi:10.1099/mgen.0.000056.
 59. Pfeifer B, Wittelsbürger U, Ramos-Onsins SE, Lercher MJ. PopGenome: an efficient Swiss army knife for population genomic analyses in R. *Mol Biol Evol.* 2014;31(7):1929–1936. doi:10.1093/molbev/msu136.
 60. Jombart T, Ahmed I. adegenet 1.3-1: new tools for the analysis of genome-wide SNP data. *Bioinformatics.* 2011;27(21):3070–3071. doi:10.1093/bioinformatics/btr521.

61. Page AJ, Cummins CA, Hunt M, Wong VK, Reuter S, Holden MTG, Fookes M, Falush D, Keane JA, Parkhill J. Roary: rapid large-scale prokaryote pan genome analysis. *Bioinformatics*. 2015;31(22):3691–3693. doi:10.1093/bioinformatics/btv421.
62. Tunyasuvunakool K, Adler J, Wu Z, Green T, Zielinski M, Židek A, Bridgland A, Cowie A, Meyer C, Laydon A, et al. Highly accurate protein structure prediction for the human proteome. *Nature*. 2021;596(7873):590–596. doi:10.1038/s41586-021-03828-1.
63. Kelley LA, Mezulis S, Yates CM, Wass MN, Sternberg MJE. The Phyre2 web portal for protein modelling, prediction and analysis. *Nat Protoc*. 2015;10(6):845–858. doi:10.1038/nprot.2015.053.
64. Waterhouse A, Bertoni M, Bienert S, Studer G, Tauriello G, Gumienny R, Heer FT, De Beer TAP, Rempfer C, Bordoli L, et al. SWISS-MODEL: homology modelling of protein structures and complexes. *Nucleic Acids Res*. 2018;46(W1):W296–W303. doi:10.1093/nar/gky427.
65. Lavigne R, Sun WD, Volckaert G. PHIRE, a deterministic approach to reveal regulatory elements in bacteriophage genomes. *Bioinformatics*. 2004;20(5):629–635. doi:10.1093/bioinformatics/btg456.
66. Carbon S, Ireland A, Mungall CJ, Shu S, Marshall B, Lewis S, Hub the A, Group the WPW. AmiGO: online access to ontology and annotation data. *Bioinformatics* [Internet]. 2009;25(2):288–289. doi:10.1093/bioinformatics/btn615.
67. Sullivan MJ, Petty NK, Beatson SA. Easyfig: a genome comparison visualizer. *Bioinformatics*. 2011;27(7):1009–1010. doi:10.1093/bioinformatics/btr039.
68. Gilchrist CLM, Chooi Y-H, Robinson P. clinker & clustermap.js: automatic generation of gene cluster comparison figures. *Bioinformatics* [Internet]. 2021;37(16):2473–2475. doi:10.1093/bioinformatics/btab007.